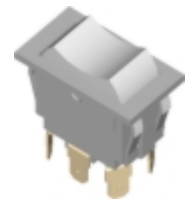
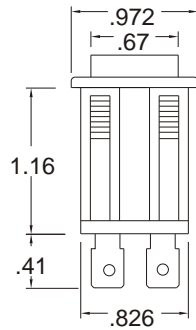
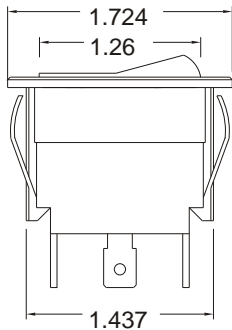


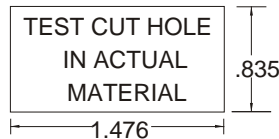
Series R13-129 Double Pole Rocker Switches



Dimensions:



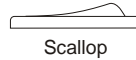
Panel Cutout:



Approvals:

UL/CSA.....16A 125VAC

Button Styles:



Contact Ratings:

16A 125 VAC
10A 250 VAC
20A 12 VDC

R13-129 B - B / R - V - 10 - 1 - 3

Series	Circuit Codes	Body Color	Button Color	Button Type	Ratings	Terminals	Hot Stamping
R13-129	A = DPST Off-On B = DPDT On-On D = DPDT (On)-Off-(On) E = DPDT On-Off-On F = DPDT On-Off-(On)	B = Black W = White	B = Black W = White R = Red	V = VEE Gloss S = Scalloped Matte	10 = 10A 250 VAC 12 = 16A 125 VAC 14 = 20A 12 VDC	1 = .250 Q.C. 2 = Solder Tail	1 = OFF-ON 2 = I - O 3 = Dot on Button 8 = Special

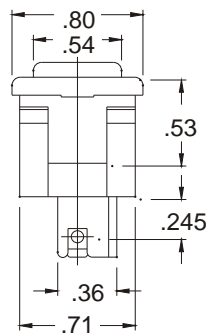
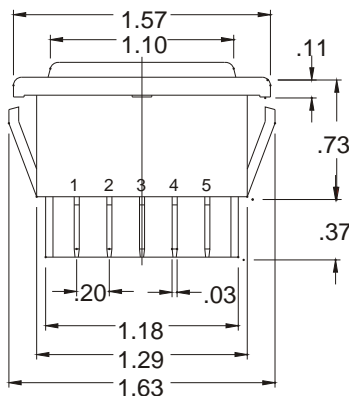
NOTE: Add PR to end of part number for Polarity Reversing
Add GS to end of part number for internal Gasket Seal

() Denotes momentary

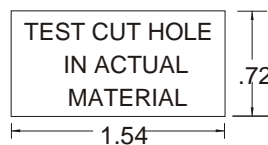
Series S-019 Double Pole Rocker Switches



Dimensions:



Panel Cutout:



Electrical Specifications:

Contact Rating.....20A 12 VDC
Terminals.....Natural Brass
Contact.....Silver Alloy

Button Styles:



S019 B

SWITCHING POSITION		
LEFT	CENTER	RIGHT
1-3	1-2	1-2
4-5	4-5	3-5

Base No	Circuit Codes	Body Color	Button Color	Button Type	Ratings	Terminals
S-019	(On)-Off-(On)	Black	Black	B = Non-illuminated Scalloped BL = Illuminated Scalloped	20 = 20A 12VDC	Quick Connect

() Denotes momentary