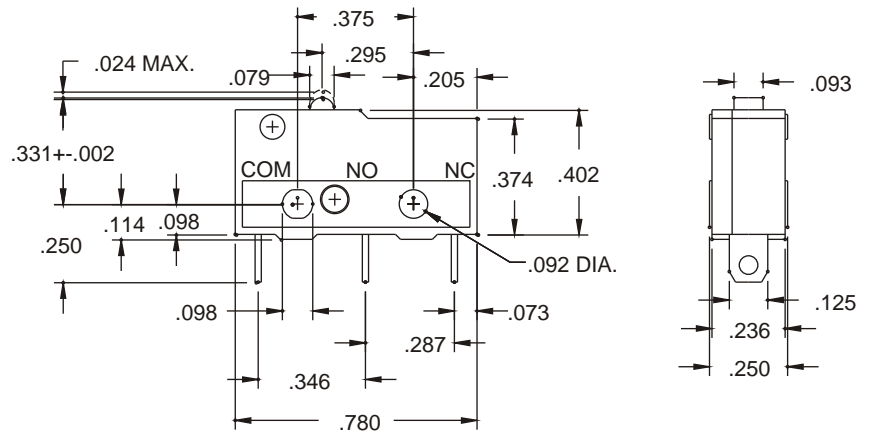
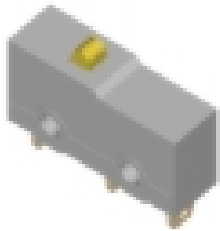


SERIES SS SNAP-ACTION SWITCHES

Electrical Specifications

Dielectric Strength.....1000 VAC 50/60Hz for 1 minute
 Insulation Resistance.....100 Megohms (Minimum)
 Contact Resistance.....30 miliohms maximum (initial)

Service Life
 Mechanically.....100,000,000 operations Minimum
 Electrically.....200,000 operations Minimum



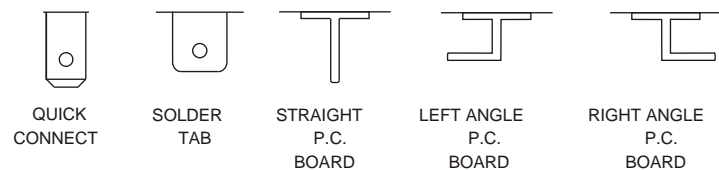
APPROVALS:

UL & CSA..... 5A 125 VAC
 3A 250 VAC

CE..... 3A 250 VAC

Base No.	Current Rating	Lever Type	Terminal
SS	05 = 5A 125 VAC 3A 250 VAC	00 = No Lever 01 = Type 1 02 = Type 2 03 = Type 3 04 = Type 4 05 = Type 5	A = Solder Terminal C2 = Quick Connect Terminal P = Straight PCB Terminal CL = Left Angle PCB Terminal CR = Right Angle PCB Terminal

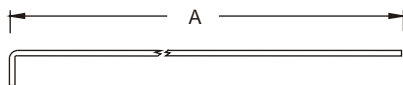
TERMINATIONS:



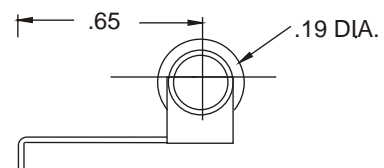
NOTE: For other lever types please consult factory

LEVER OPTIONS:

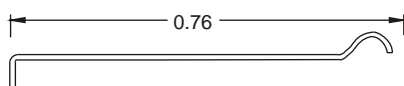
- TYPE 1 A = .66
- TYPE 2 A = .74
- TYPE 3 A = .98
- TYPE 8 A = 2.375



TYPE 5



TYPE 4



CONSULT FACTORY FOR OTHER LEVER TYPES AVAILABLE