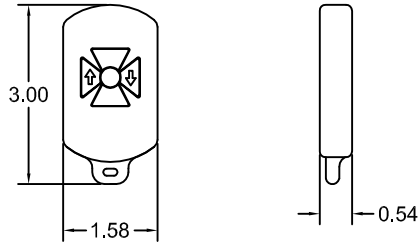


Waterproof Transmitter(KF340-2WP),
Supplied in Waterproof Kit
Waterproof to IP65



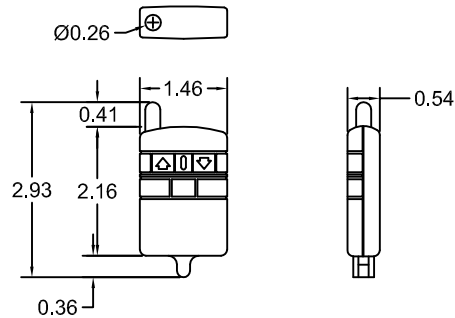
Specifications

- Frequency 340 MHz
- Input voltage: 120VAC
- Operating temperature range: 0°F to 160°F.
- Transmit range is 100 feet under normal operating conditions.
- Up to 30 keyfob transmitters can be used with each receiver.
- Receiver can be setup for momentary or latching operation.

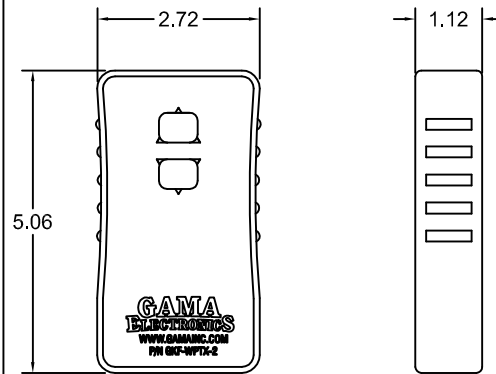
Available Accessories:

- 340MHz Long Range External Antenna (LRA-340)
- 2-Button Waterproof Transmitter (KF340-2WP)
- 2-Button Keyfob Transmitter (KF340-2)
- Package of 6 Replacement A23 12V Alkaline Keyfob Batteries (A23-6)
- 2-Button Rechargeable Transmitter (GKF-WPTX-2)

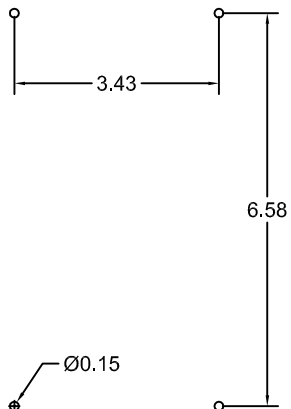
Standard Transmitter(KF340-2), Supplied
in Standard Kit



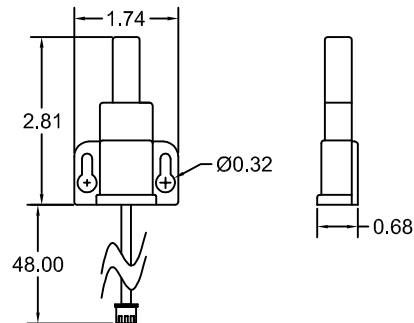
Rechargeable Transmitter(GKF-WPTX-2),
Supplied in Rechargeable Kit



Mounting Detail



Long Range Antenna (LRA-340), Supplied in Long
Range Kit



INFORMATION CONTAINED HEREIN IS PROPRIETARY INFORMATION OF GAMA ELECTRONICS INC.
THE DISSEMINATION, USE OR DUPLICATION OF THIS INFORMATION, FOR ANY PURPOSE
OTHER THAN THAT FOR WHICH THE INFORMATION IS PROVIDED, IS PROHIBITED, EXCEPT
BY EXPRESS WRITTEN PERMISSION.

SIZE

A

RF120VPRDC

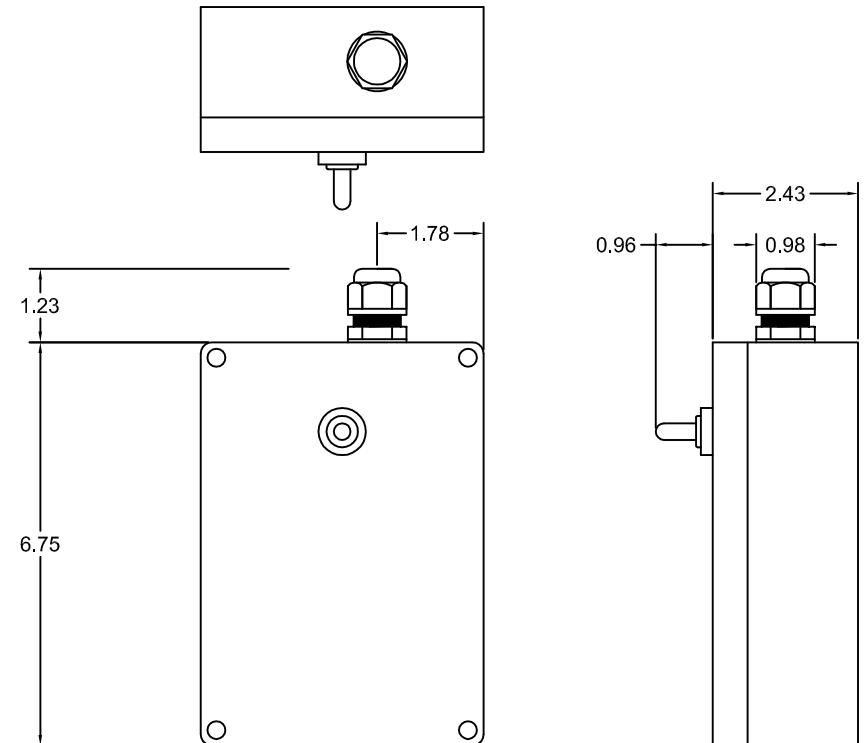
REV.

A

REVISIONS

LET.	WAS	DATE	APP.	ENTERED
O	Original Release	05/31/17		
A	Update to 30 transmitters per unit	03/09/20		

Receiver



DECIMAL TOLERANCE
UNLESS OTHERWISE
SPECIFIED:

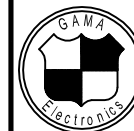
LINEAR:
.XXXXX ±.0005
.XXXX ±.001
.XXX ±.003
.XX ±.015
X/X ±1/32
X ±1/16

ANGULAR:
.XXXX ±01°
.XX ±01°
X ±1°

THIS DRAWING IN
ACCORDANCE WITH
DOD-STD-100 UNLESS
OTHERWISE SPECIFIED

All dimensions in inches.
(unless otherwise noted)

THIRD ANGLE
PROJECTION



GAMA Electronics, Inc.

P.O. Box 1488, Crystal Lake, IL 60039

NAME

RF Remote

DRN

KEG 05/31/17

MATERIAL

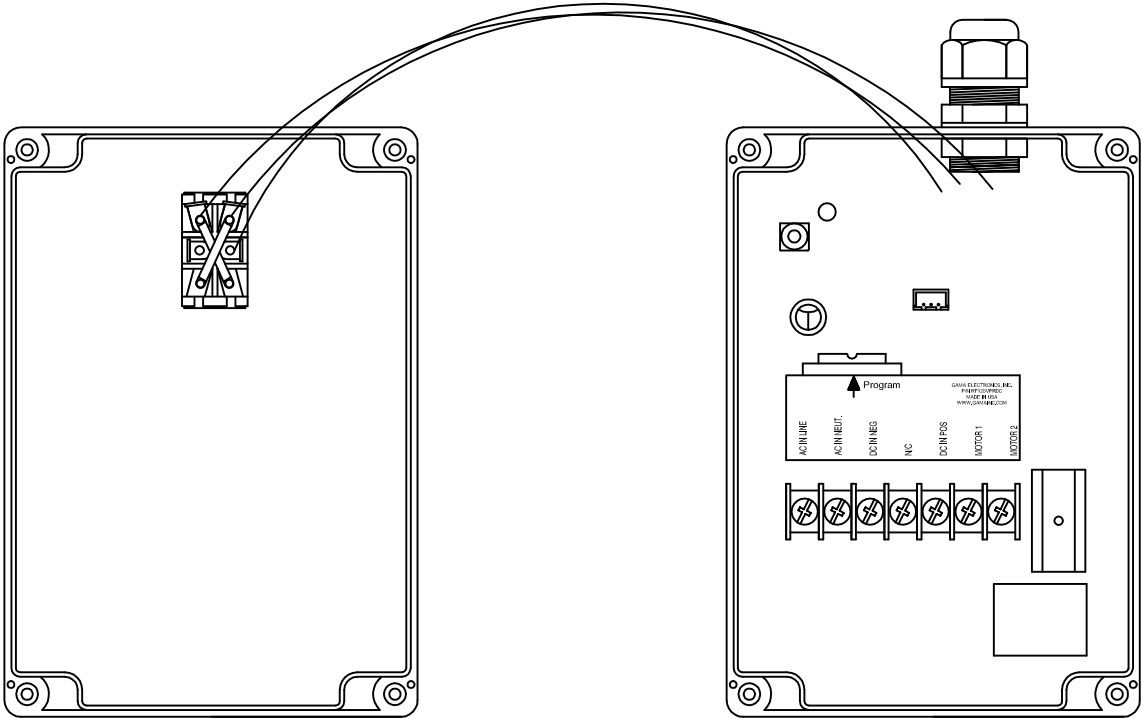
RELEASED

05/31/17

SHEET

1 OF 2

- Tested with:
- Harbor Freight, Chicago Electric Winch Model 96127, 1,500 Pound.
 - Northern Tool, WARN Winch Model 80010, 1,000 Pound.
 - Northern Tool, WARN Winch Model 85330, 1,500 Pound.
 - Northern Tool, Dutton Lainson Model 25046, 4,000 Pound.
 - Northern Tool, Dutton Lainson Model SA5015AC, 1,200 Pound.
 - Northern Tool, Dutton Lainson Model SA9015AC, 2,700 Pound.
 - Northern Tool, Superwinch Model AC1500, 1,500 Pound.
 - Northern Tool, Superwinch Model AC1,000, 1,000 Pound.
 - Keeper Winch, Model KAC1500, 1,500 Pound.
 - Northern Tool, Model 54129, 1,500 Pound



SIZE		RF120VPRDC			REV.
A					A
REVISIONS					
LET.	WAS		DATE	APP.	ENTERED
O	Original Release		05/31/17		
A	Update to 30 transmitters per unit		03/09/20		

INFORMATION CONTAINED HEREIN IS PROPRIETARY INFORMATION OF GAMA ELECTRONICS INC.
THE DISSEMINATION, USE OR DUPLICATION OF THIS INFORMATION, FOR ANY PURPOSE
OTHER THAN THAT FOR WHICH THE INFORMATION IS PROVIDED, IS PROHIBITED, EXCEPT
BY EXPRESS WRITTEN PERMISSION.

DECIMAL TOLERANCE
UNLESS OTHERWISE
SPECIFIED:

LINEAR:
.XXXXX ±.0005
.XXXX ±.001
.XXX ±.003
.XX ±.015
X/X ±1/32
X ±1/16

ANGULAR:
.XXXX ±01°
.XX ±01°
X ±1°

THIS DRAWING IN
ACCORDANCE WITH
DOD-STD-100 UNLESS
OTHERWISE SPECIFIED

All dimensions in inches.
(unless otherwise noted)

THIRD ANGLE
PROJECTION



GAMA Electronics, Inc.
P.O. Box 1488, Crystal Lake, IL 60039

NAME
Long Range RF Remote

DRN. **KEG 05/31/17**

RELEASED **05/31/17**

MATERIAL

SHEET **2 of 2**