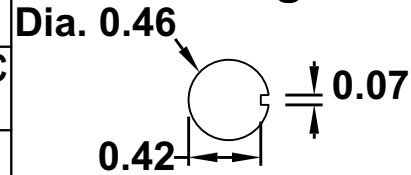


28PR-MOM

Toggle Switch, 30A Polarity Reversing DC Motor Control – Momentary

<https://www.gamainc.com/product/28pr-mom/>

Mounting Hole



GAMA ELECTRONICS

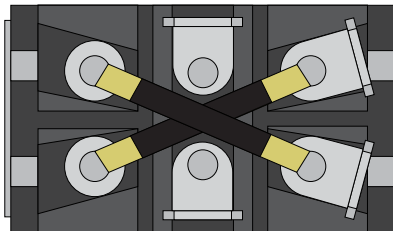
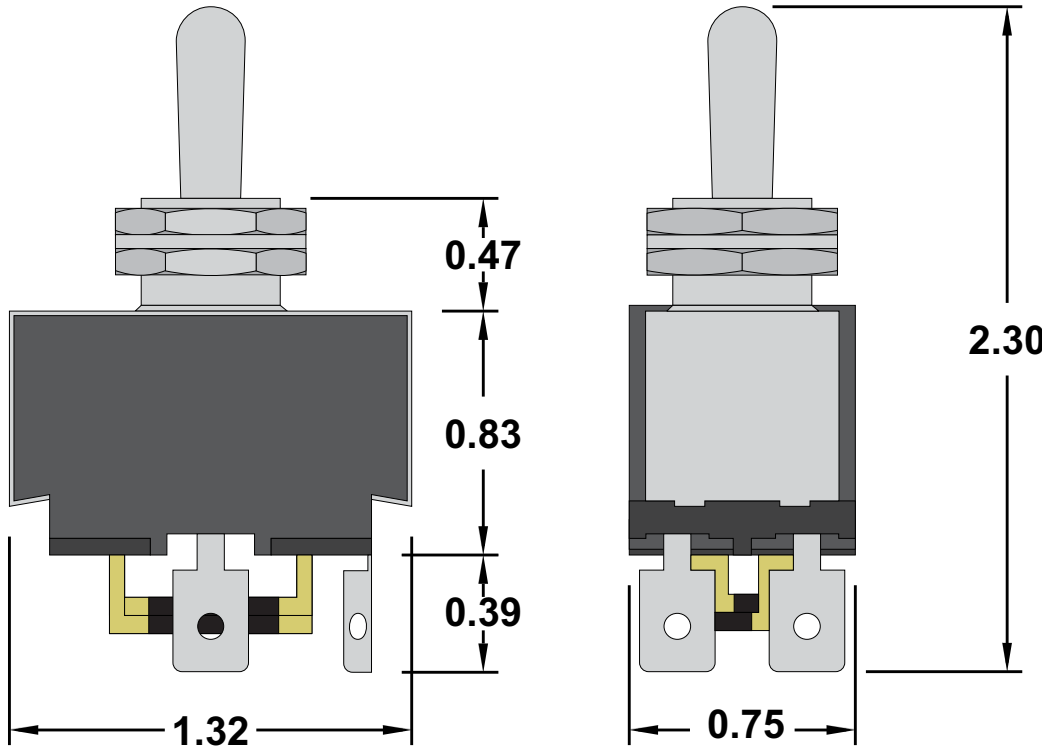
P.O. Box 1488, Crystal Lake, IL 60039

Phone: 815-356-9600

Fax: 815-356-9603

Email: gama@gamainc.com

www.gamainc.com



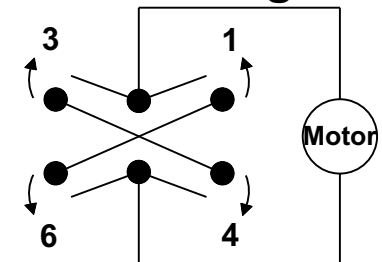
Available Accessories

- Waterproof Boot ([W-70B](#))
- Mounting Plate ([438-MP](#))
- Toggle Guard ([438-TG](#))
- Accessory Pack ([438-AP](#))

Specifications

- Circuit Code: DPDT (ON)-OFF-(ON) Polarity Reversing
- Rating: 30A 12VDC
- 4 Terminals: 1/4" Quick Connect
- Material: Frames are metal plated. Terminals are nickel plated brass. Base is phenolic. Chrome Plated Metal Bat Handle.
- UL & CSA Approved.
- Optional Waterproof boot is available.

Circuit Diagram



Drawn By: KEG

Information contained herein is proprietary information of GAMA Electronics Inc. The dissemination use or duplication of this information, for any purpose other than that for which the information is provided, is prohibited except by express written permission.

All dimensions are in inches and have a +/- .015" tolerance unless otherwise specified.

Rev: A

Pg. 1 of 1

Release Date: 04/03/20

Third Angle Projection

