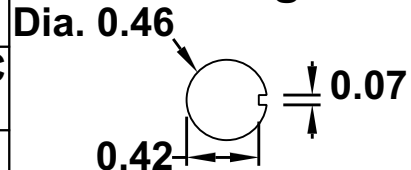


# 28PR-MTD

Toggle Switch, 30A Polarity Reversing DC  
Motor Control – Maintained

<https://www.gamainc.com/product/28pr-mtd/>

## Mounting Hole



# GAMA ELECTRONICS

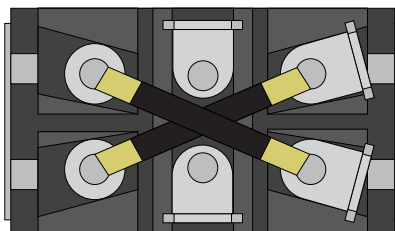
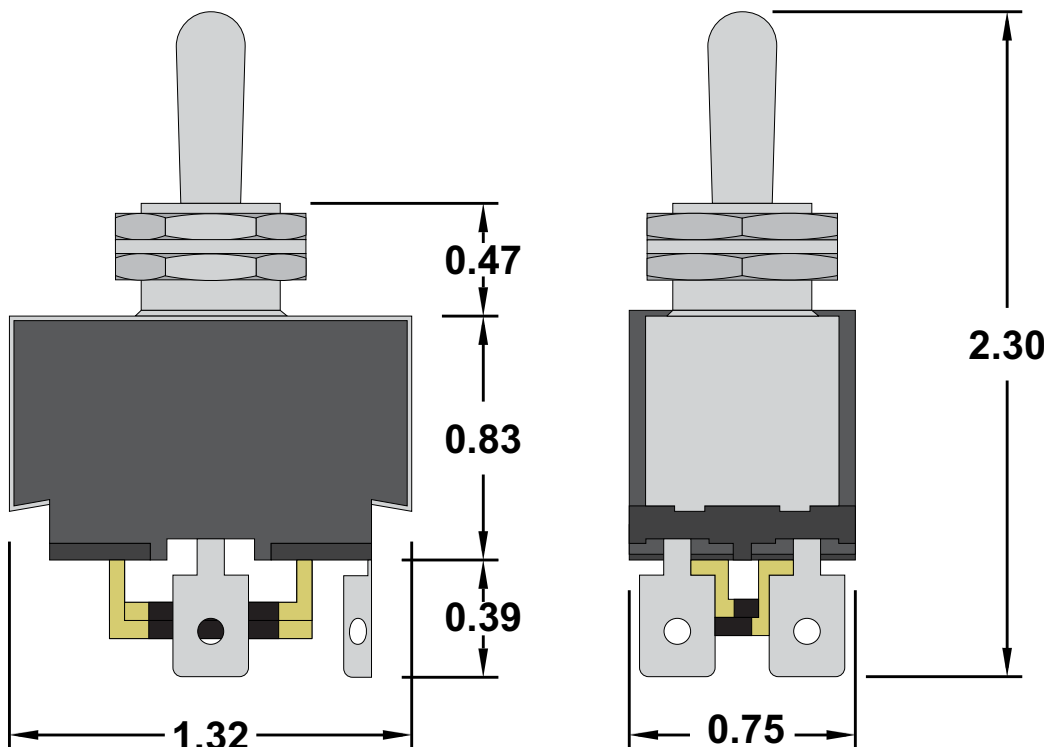
P.O. Box 1488, Crystal Lake, IL 60039

Phone: 815-356-9600

Fax: 815-356-9603

Email: [gama@gamainc.com](mailto:gama@gamainc.com)

[www.gamainc.com](http://www.gamainc.com)



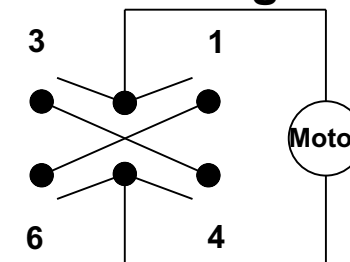
## Available Accessories

- Waterproof Boot ([W-70B](#))
- Mounting Plate ([438-MP](#))
- Toggle Guard ([438-TG](#))
- Accessory Pack ([438-AP](#))

## Specifications

- Circuit Code: DPDT (ON)-OFF-(ON)  
Polarity Reversing
- Rating: 30A 12VDC
- 4 Terminals: 1/4" Quick Connect
- Material: Frames are metal plated.  
Terminals are nickel plated brass.  
Base is phenolic. Chrome Plated  
Metal Bat Handle.
- UL & CSA Approved.
- Optional Waterproof boot is avail-  
able.

## Circuit Diagram



Drawn By: KEG

Information contained herein is proprietary information of GAMA Electronics Inc. The dissemination use or duplication of this information, for any purpose other than that for which the information is provided, is prohibited except by express written permission.

All dimensions are in inches and have a +/- .015" tolerance unless otherwise specified.

Rev: 0

Pg. 1 of 1

Release Date: 07/20/20

Third Angle Projection

