

438-3P-MM

Toggle Switch, 30A DPDT On-Off
-Momentary On

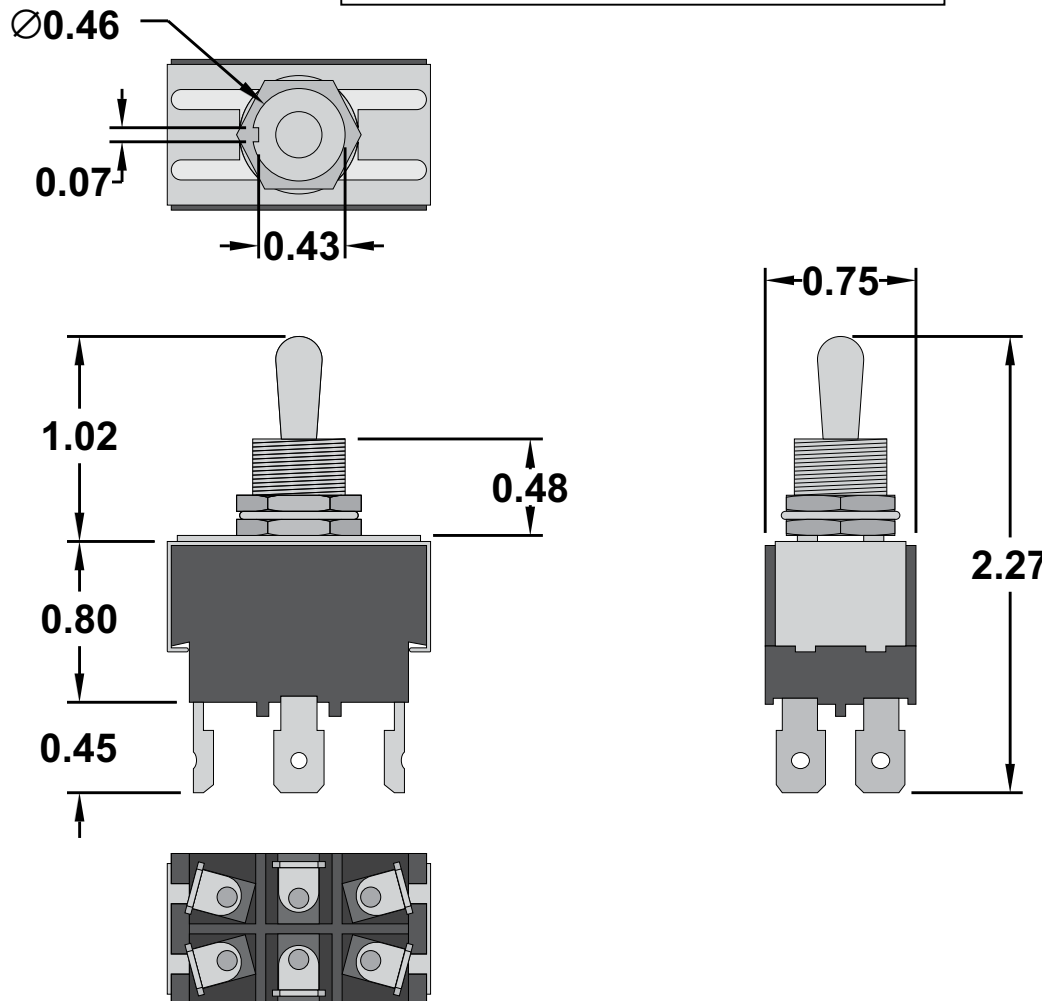
<https://www.gamainc.com/product/438-3p-mm/>

Specifications

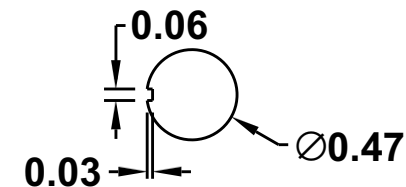
- 30A @ 12VDC, 20A @ 125VAC, 10A @ 250VAC
- 1 1/2 HP
- Double Pole Double Throw
- 3 position On-Off- Momentary On
- Mounts in a 7/16" diameter hole
- 1/4" quick connect terminals

GAMA ELECTRONICS

P.O. Box 1488, Crystal Lake, IL 60039
Phone: 815-356-9600
Fax: 815-356-9603
Email: gama@gamainc.com
www.gamainc.com



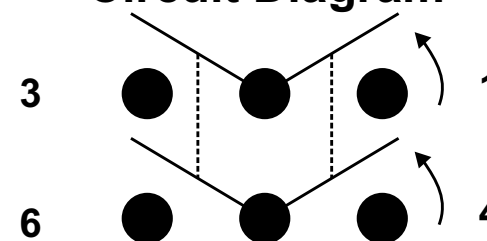
Mounting Hole



Available Accessories

- Waterproof Boot ([W-70B](#))
- Toggle Switch Guard ([438-TG](#))
- Toggle Switch Mounting Plate ([438-MP](#))
- Toggle Switch Accessory Pack ([438-AP](#))

Circuit Diagram



Drawn By: KEG

Information contained herein is proprietary information of GAMA Electronics Inc. The dissemination use or duplication of this information, for any purpose other than that for which the information is provided, is prohibited except by express written permission.

All dimensions are in inches and have a +/- .015" tolerance unless otherwise specified.

Rev: A

Pg. 1 of 1

Release Date: 06/01/20

Third Angle Projection