

# 438PR-MM3

Toggle Switch, 30A Polarity Reversing DC  
Motor Control – On-Off-Momentary On

<https://www.gamainc.com/product/438pr-mm3/>

# GAMA ELECTRONICS

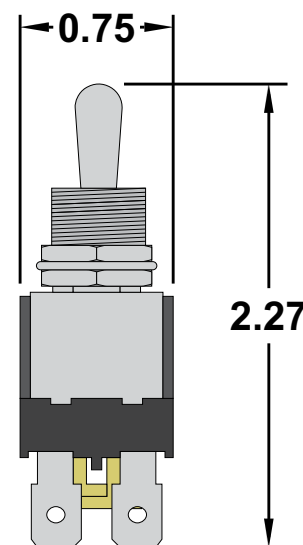
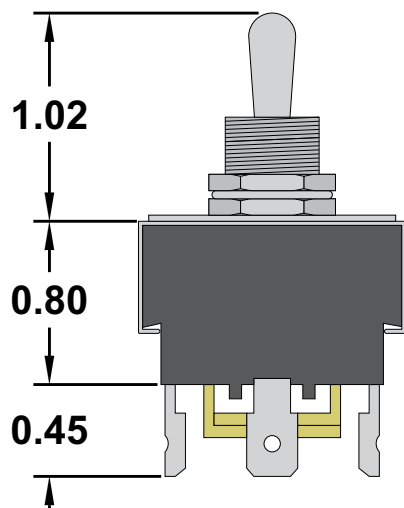
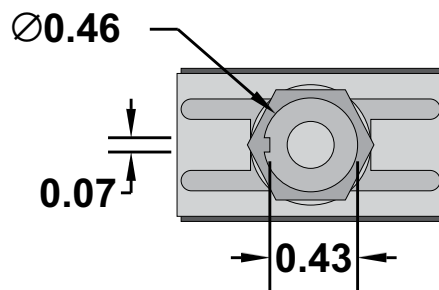
P.O. Box 1488, Crystal Lake, IL 60039

Phone: 815-356-9600

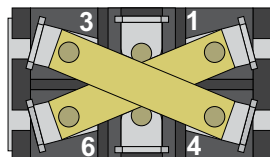
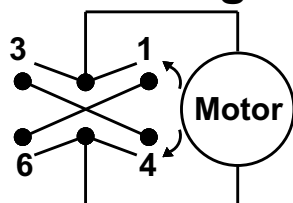
Fax: 815-356-9603

Email: [gama@gamainc.com](mailto:gama@gamainc.com)

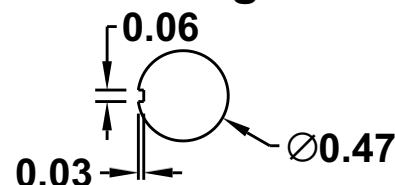
[www.gamainc.com](http://www.gamainc.com)



## Circuit Diagram



## Mounting Hole



## Available Accessories

- Waterproof Boot ([W-70B](#))
- Toggle Switch Guard ([438-TG](#))
- Toggle Switch Mounting Plate ([438-MP](#))
- Toggle Switch Accessory Pack ([438-AP](#))

## Specifications

- 30 amps @ 12 VDC
- 15 amps @ 24 VDC.
- Polarity Reversing
- Double Pole Double Throw
- 3 position On-Off-Momentary On
- Mounts in a 7/16" diameter hole
- 1/4" quick connect terminals

Drawn By: KEG

Information contained herein is proprietary information of GAMA Electronics Inc. The dissemination use or duplication of this information, for any purpose other than that for which the information is provided, is prohibited except by express written permission.

All dimensions are in inches and have a  $\pm .015$ " tolerance unless otherwise specified.

Rev: 0

Pg. 1 of 1

Release Date: 01/10/19

Third Angle Projection

