

556-R-LED

Waterproof Pushbutton Switch, SPST
Normally Open – Momentary

<https://www.gamainc.com/product/556-r-led/>

GAMA ELECTRONICS

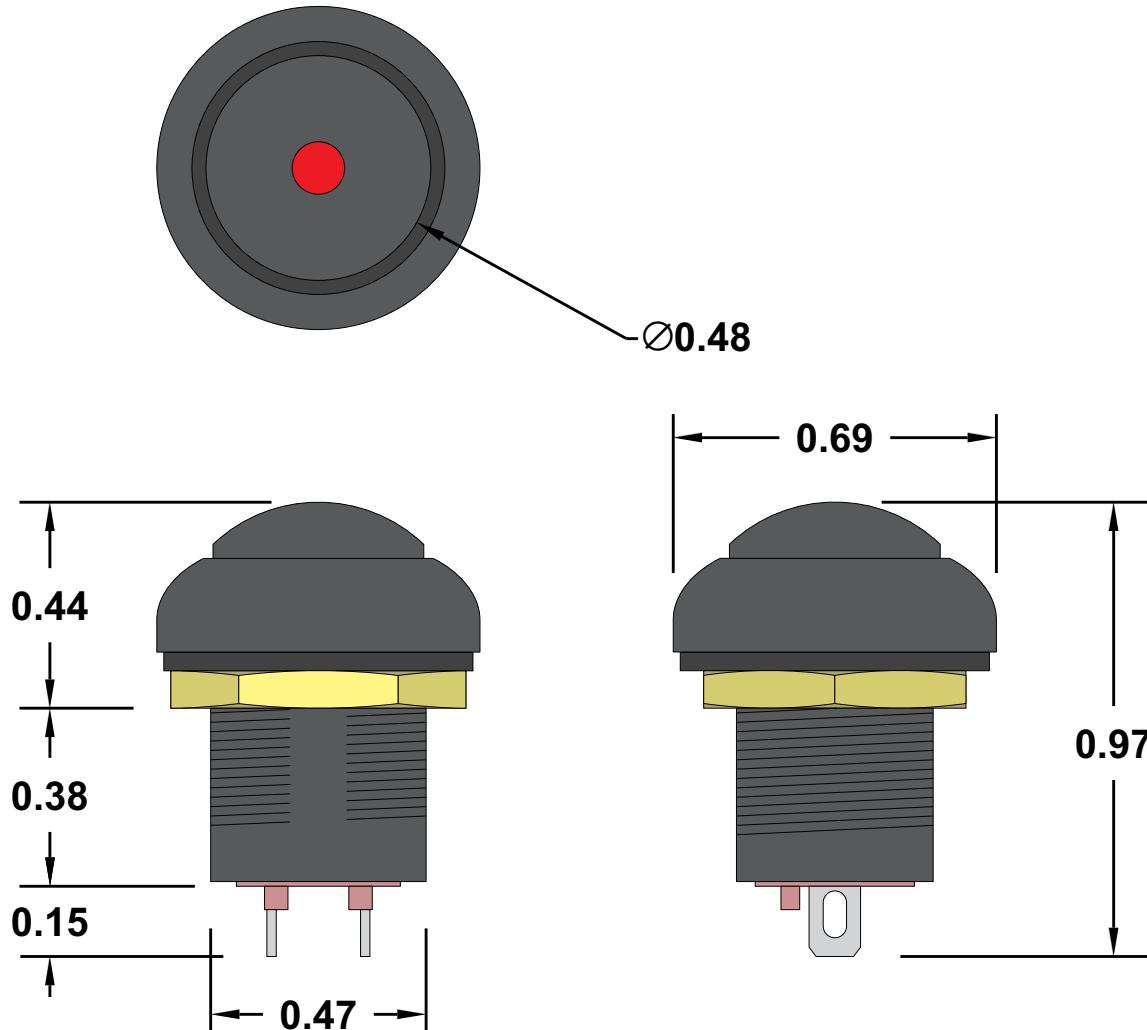
P.O. Box 1488, Crystal Lake, IL 60039

Phone: 815-356-9600

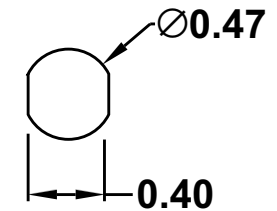
Fax: 815-356-9603

Email: gama@gamainc.com

www.gamainc.com



Mounting Hole



Specifications

- SPST Off-On
- Rated at 2A @ 12VDC
- Switch Body is Valox (PBT)
- Button is Nylon 6/6 (UL94-V2)
- Waterproof to IP67
- Gold plated copper terminals
- 12V LED Illumination

Drawn By: KEG

Information contained herein is proprietary information of GAMA Electronics Inc. The dissemination use or duplication of this information, for any purpose other than that for which the information is provided, is prohibited except by express written permission.

All dimensions are in inches and have a +/- .015" tolerance unless otherwise specified.

Rev: 0

Pg. 1 of 1

Release Date: 06/17/20

Third Angle Projection

