

7509I

Keylock Switch, 3-Position Single Pole
Momentary On-Off-Momentary On

<https://www.gamainc.com/product/7509i/>

GAMA ELECTRONICS

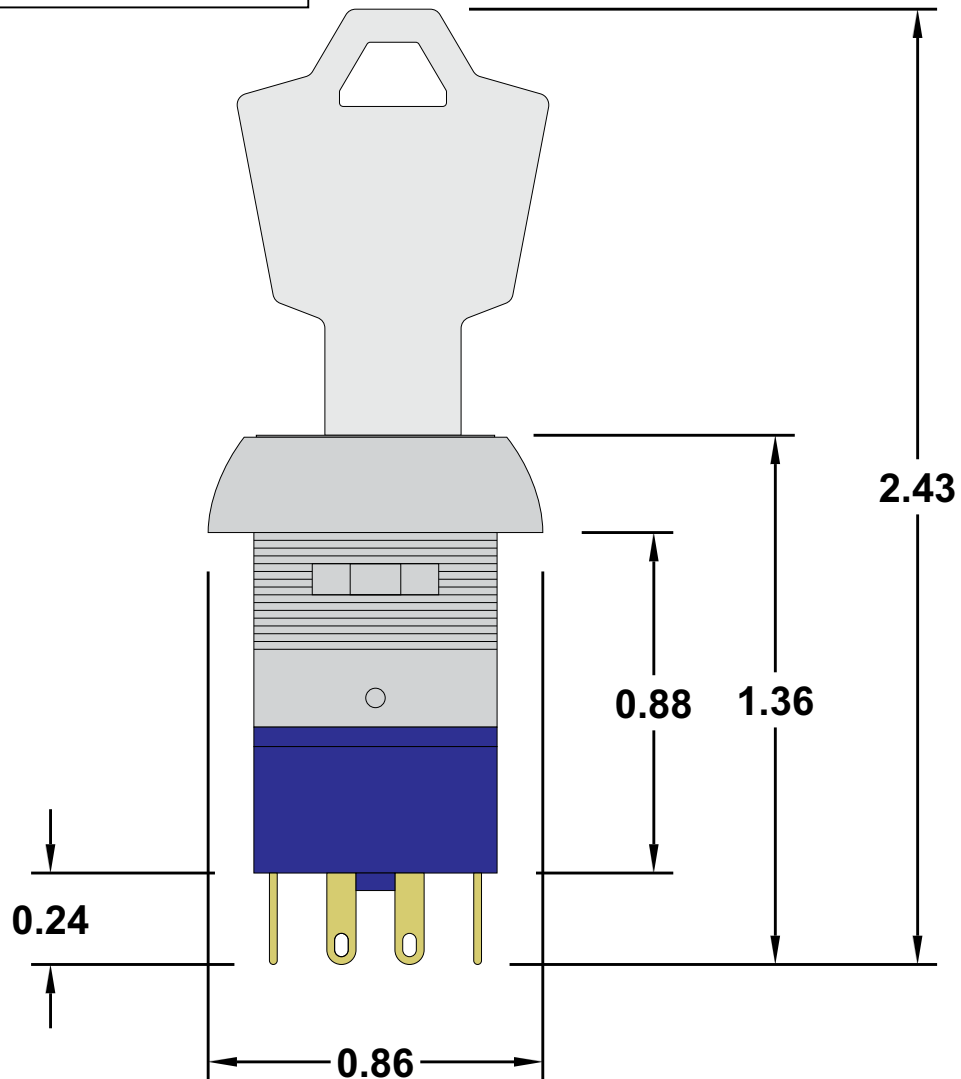
P.O. Box 1488, Crystal Lake, IL 60039

Phone: 815-356-9600

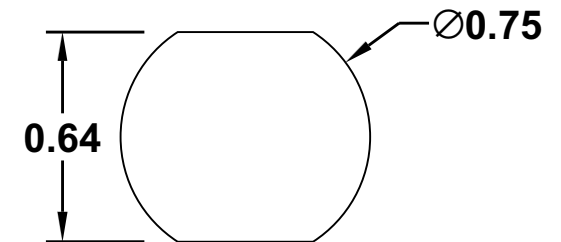
Fax: 815-356-9603

Email: gama@gamainc.com

www.gamainc.com



Mounting Hole



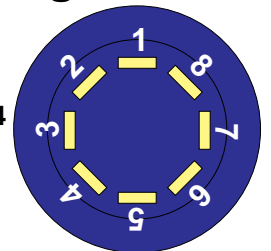
Specifications

- Circuit Code: Single Pole Double Throw On-On
- Rating: 4A 125VAC, 2A 250VAC, 4A 28VDC
- Terminals: Solder
- UL Approved

Circuit Diagram

Connection Terminals:

- Position One: 1-8, 4-5
- Position Two: 1-2, 5-6
- Position Three: 7-8, 3-4
- Key Pull Position 1
Position 1 Maintained
Position 2 & 3
Momentary



Drawn By: KEG

Information contained herein is proprietary information of GAMA Electronics Inc. The dissemination use or duplication of this information, for any purpose other than that for which the information is provided, is prohibited except by express written permission.

All dimensions are in inches and have a +/- .015" tolerance unless otherwise specified.

Rev: 0

Pg. 1 of 1

Release Date: 04/24/20

Third Angle Projection

