



### Included in this Kit:

- (1) LRF120VPR1L-LS Receiver
- (1) 3-Button Transmitter with Light
- (1) Long Range Antenna LRA340

### Available accessories:

- Extra Long Range Antenna LRA-340
- 3-Button Waterproof Transmitter KF340-3L-WP
- Rechargeable Transmitter GKF-WPTX-3L
- 3-Button Keyfob Transmitter KF340-3
- Package of 6 A23 12V Alkaline Batteries A23-6
- Clear Protective Transmitter Pouch ZLB-67

The LRF120VPR1L is an RF receiver operating at a fixed frequency of 340 MHZ. It operates from 120VAC and provides one polarity reversing output for use with a four/six lead AC motor. The receiver has provision for two normally-closed limit switches, one for either direction. The receiver is not designed to operate with any existing hand or drum switch. The receiver is equipped with a manual toggle switch. An additional latching output is available for connecting to a 120VAC light. Up to thirty, three-button keyfob transmitters can be used to activate the receiver's relay. The receiver has a terminal block for connecting the power and relay contacts. Each transmitter has a unique address that is transmitted when a button is pressed. A "program" button is provided on the receiver to program the transmitter(s) address into the receiver's memory. An LED on the receiver indicates the receiver's programming status and illuminates when the receiver is energized. The receiver is encased in a waterproof enclosure. The operating range is approximately 500 ft. Operating temperature range is 0°F to 160°F.

**Polarity Reversing Output:** The transmitter has two buttons assigned to the motor output. The up (^) button runs the motor in one direction and the down (v) button runs the motor in the opposite direction. The reversing function accomplished by reversing the phase on two of the four motor connections at the receiver output.

**Manual Switch:** The receiver is equipped with a manual switch. This switch replaces any hand or drum switch previously connected to the motor. The switch will operate the control in the same mode as the remote control (momentary or latching).

**Limit Switches:** The receiver is equipped with 2 limit switch provisions. This switch allows the user to stop the motor using a normally closed limit switch on either direction. \*NOTE: The system is shipped with the limit switches disabled. To use the limit switches you will need to remove the jumper wire between the COMMON and LIMIT SWITCH inputs.

**Light Output:** The light output is activated using the light button on the transmitter. Press the light button once to latch this output on. Press the light button again to turn the light output off.

**Maximum Ratings:** Power for the receiver can be in the range of 100VAC to 132VAC. The relay contacts are rated at 20 Amps.

### **Programming Instructions**

Each transmitter has its own unique internal address along with the data as to which button is pressed and transmitted. The receiver needs to be programmed to respond only to the specific transmitter it is intended to operate with. The following steps configure the receiver to operate with a particular transmitter. Up to 30 transmitters can be programmed to one receiver. Please read the entire programming procedure before starting. When the receiver enters program mode, all previous transmitter addresses that were programmed will be erased from the receiver's memory.

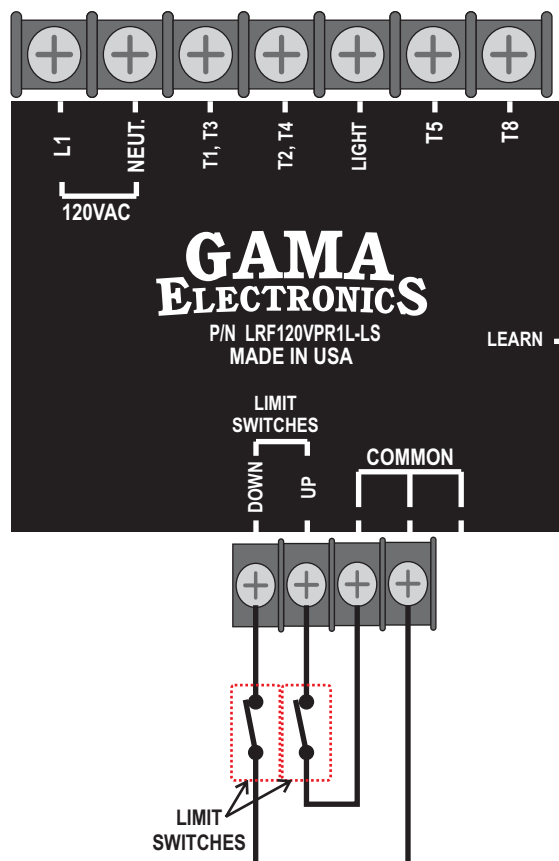
1. Locate the pushbutton labeled "LEARN" on the receiver. Press and hold this button until the red LED next to the program button illuminates (approximately 3 seconds). The receiver is now in the transmitter program mode. Release the button. At this point all previously programmed transmitter addresses are erased from the receiver's memory.
2. To configure the receiver for a latching output, go to Step 4.
3. To configure the receiver for momentary output, press and release the UP button on the transmitter ONCE and verify that the red program LED extinguishes and then illuminates. Proceed to Step 5.
4. To configure the receiver for latching output, press and release the DOWN button on the transmitter ONCE and verify that the red program LED extinguishes and illuminates.
5. Repeat previous step for additional transmitters that will operate with this particular receiver. The red LED on the receiver will extinguish and illuminate (blink) once each transmitter being programmed. The receiver will flash the LED rapidly to transmitters that have already been programmed. The last transmitter that is programmed determines the receiver's relay operating mode (momentary or latching).
6. The receiver will return to normal mode if no transmitter buttons are pressed for 5-seconds. The red LED on the receiver will blink rapidly, then extinguish. The receiver is now in the normal mode of operation. This completes the programming instructions. The receiver will retain all of its programming even when power is removed.

### Wiring Instructions

Prior to this, verify that there is no power at any of the motor terminals.

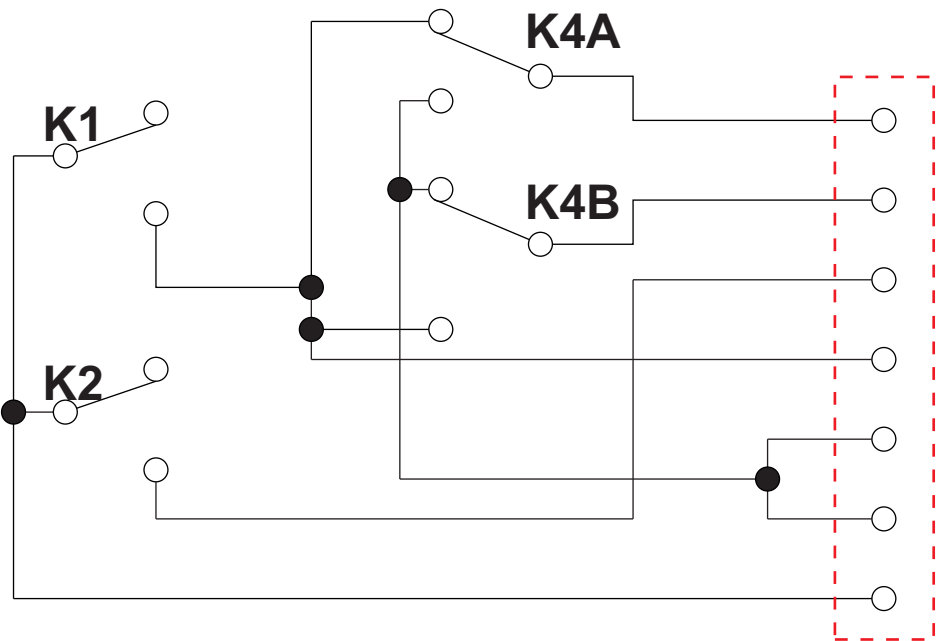
1. Disconnect or turn off the circuit breaker to remove power (if a hand or drum switch is connected to the motor it will need to be disconnected). Takes notes before disconnecting the switch in the unlikely event it will need to be reconnected.
2. See motor connections using the tables on pages 4. Reference page 5 for directions to terminal connections specific to the motor.
3. 120VAC power is connected to the line and neutral terminal of the receiver.

**NOTE:** After completing the installation, if the motor goes the wrong direction, simply swap the wires connected to T5 and T8 on the receiver. The motor will now rotate in the correct direction. The 120VAC light connects between “common” and “light” terminals on the receiver.



**NOTE:** The unit is shipped with the limit switches bypassed. To use the limit switches, remove the wire between the common and limit switch input and connect normally closed limit switches as shown.

### Schematic



Relays shown in off position

#### Truth Table

K1 = Up or Down  
K4 = Up  
K2 = Light (Latch On/Latch Off)

T8

T5

LIGHT

T2, T4

T1, T3

AC IN NEUT

AC IN LINE

120VAC IN

### **Troubleshooting**

All remote-control systems shipped by GAMA Electronics are 100% functionally tested just prior to shipment.

If your RF remote control system does not work out of the box, stops working or functions intermittently please take the following steps to resolve common issues. Please note that you must be 2-3 feet away from the receiver when operating the remote control. Operating within 2-3 feet may result in no operation or intermittent operation.

#### **1. Replace the A23 12V Battery in the transmitter**

- The remote control can activate during shipping and drain the battery that is installed in the control. We send a replacement battery with the system if this occurs.

#### **2. Check the voltage supply at the receiver**

- The receiver is designed to function at 100-132VAC. Voltage on the (+) and (-) terminals on the control should be within this range.

#### **3. Reprogram the remote control**

- If the system is non-functional try to reprogram the remote control. The program may not have taken during the programming process or the program button may have been pressed. If the program button is pressed the memory of the remote controls programmed to the receiver are erased.

#### **4. Listen and look for functionality on the receiver.**

- The LED that is used for programming the system will illuminate when the receiver is activated. You will also hear a “click” when the internal relays engage. If you can see the LED illuminate and you hear the relay “click” the issue is most likely in the wiring or device being controlled.

Motor Name	Figure
STANDARD MOTOR WITH "T" NUMBERS	See Figure 1
STANDARD MOTOR WITH COLORED WIRE	See Figure 2
A.O Smith with L1, L2 Terminals & Colored Wire	See Figure 3
A.O. Smith C426 Motors with Terminals & Colored Wires	See Figure 6
A.O. Smith C526 Motors with Terminals & Colored Wire	See Figure 6
A.O. Smith C926 Motor with Colored Wire	See Figure 7
A.O. Smith Motor 7-181021-20	See Figure 19
A.O. Smith Motor C56A31B17	See Figure 20
A.O. Smith Motor C56B05B17	See Figure 20
A.O. Smith Motor	See Figure 11
Ace Motors with Terminals	See Figure 8
Ajax Motor XTM-34	See Figure 30
Baldor Motor CPI2000	See Figure 16
Baldor Motor 3510M	See Figure 28
Baldor Motor Type LC, DV	See Figure 17
Baldor Motors with L1, L2 Terminals & Colored Wire	See Figure 3
Century AC Motors with Colored Wire	See Figure 7
Century AC Motors with Terminals & Colored Wire	See Figure 6
Century Motors with Terminals	See Figure 4
Dayton Motor 6K719L (Thermal Protection)	See Figure 22
Eastbay Motors with Terminals	See Figure 5
Elite Motor 60420	See Figure 29
Elite Pointed Motors	See Figure 12
Emerson Motors with Terminals	See Figure 10
GE Motors with Terminals & Colored Wire	See Figure 9
GE Motor 5KC48UG711EX	See Figure 27
Harbor Freight Motors 67839,60814,67842,68288	See Figure 32
Leeson Motor M6K17F61A	See Figure 21
Leeson Motors with Terminals	See Figure 8
Leeson Type Motor (with Protector) M6C17FB10	See Figure 18
Magnetek Motor 8-181021-20	See Figure 23
Magnetek Motors with Terminals	See Figure 4
Marathon Motor 5KC42JN0214 (3/4 HP)	See Figure 15
Marathon Motor 5KC49PN0216 (1 HP)	See Figure 15
Marathon Motor 5KC49TN0063Y	See Figure 24
Marathon Motor 5KCP35KNB057AS	See Figure 24
Marathon Motor 7PJ56C17F5945	See Figure 21
Marathon Motors with Terminals & Colored Wire	See Figure 9
Powerfist Motor 8703050	See Figure 18

Motor Name	Figure
STANDARD MOTOR WITH "T" NUMBERS	See Figure 1
STANDARD MOTOR WITH COLORED WIRE	See Figure 2
A.O Smith with L1, L2 Terminals & Colored Wire	See Figure 3
A.O. Smith C426 Motors with Terminals & Colored Wires	See Figure 6
A.O. Smith C526 Motors with Terminals & Colored Wire	See Figure 6
A.O. Smith C926 Motor with Colored Wire	See Figure 7
A.O. Smith Motor 7-181021-20	See Figure 19
A.O. Smith Motor C56A31B17	See Figure 20
A.O. Smith Motor C56B05B17	See Figure 20
A.O. Smith Motor	See Figure 11
Ace Motors with Terminals	See Figure 8
Baldor Motor CPI2000	See Figure 16
Baldor Motor Type LC, DV	See Figure 17
Baldor Motors with L1, L2 Terminals & Colored Wire	See Figure 3
Century AC Motors with Colored Wire	See Figure 7
Century AC Motors with Terminals & Colored Wire	See Figure 6
Century Motors with Terminals	See Figure 4
Dayton Motor 6K719L (Thermal Protection)	See Figure 22
Eastbay Motors with Terminals	See Figure 5
Elite Pointed Motors	See Figure 12
Emerson Motors with Terminals	See Figure 10
GE Motors with Terminals & Colored Wire	See Figure 9
Leeson Motor M6K17F61A	See Figure 21
Leeson Motors with Terminals	See Figure 8
Leeson Type Motor (with Protector) M6C17FB10	See Figure 18
Magnetek Motor 8-181021-20	See Figure 23
Magnetek Motors with Terminals	See Figure 4
Marathon Motor 5KC42JN0214 (3/4 HP)	See Figure 15
Marathon Motor 5KC49PN0216 (1 HP)	See Figure 15
Marathon Motor 5KC49TN0063Y	See Figure 24
Marathon Motor 5KCP35KNB057AS	See Figure 24
Marathon Motor 7PJ56C17F5945	See Figure 21
Marathon Motors with Terminals & Colored Wire	See Figure 9
Powerfist Motor 8703050	See Figure 18
Regal Beloit Motor	See Figure 11
Regal Beloit Motor 52A105379AA	See Figure 13
Regal Beloit Motor C56AD36B17	See Figure 14
Regal Beloit Motor with Type K Protector	See Figure 18
US Motors C63BXFKJ-5564	See Figure 26
WEG Motor with Protection	See Figure 25

FIGURE 1

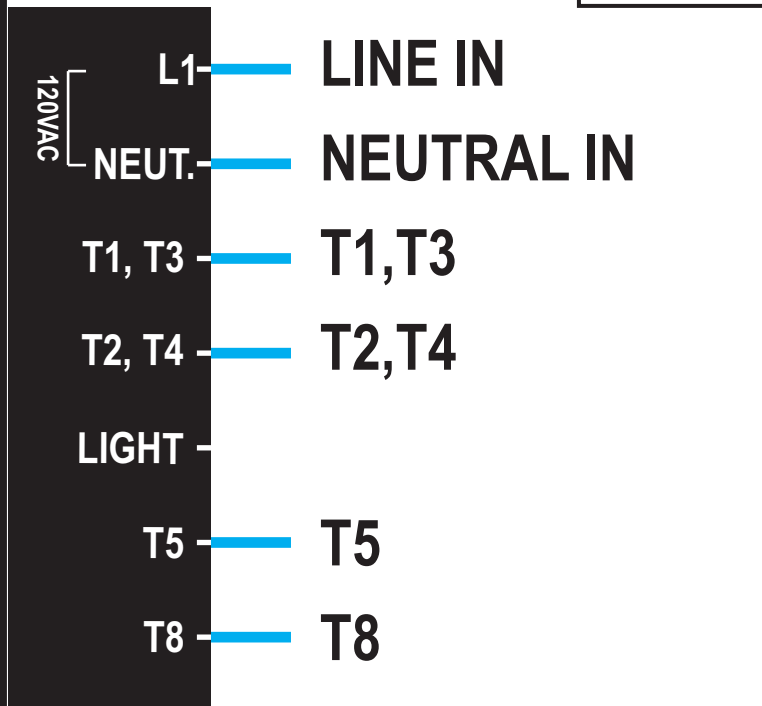


FIGURE 2

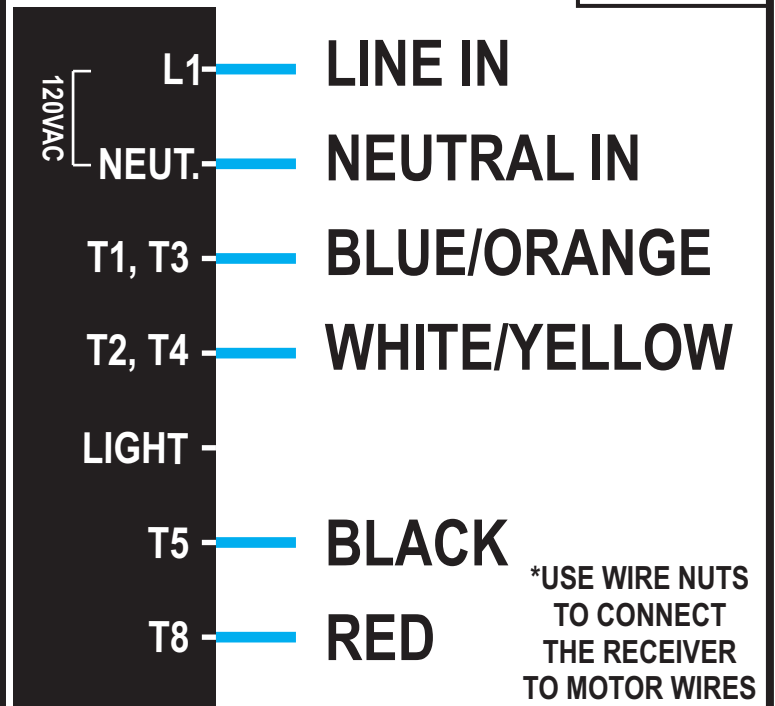


FIGURE 3

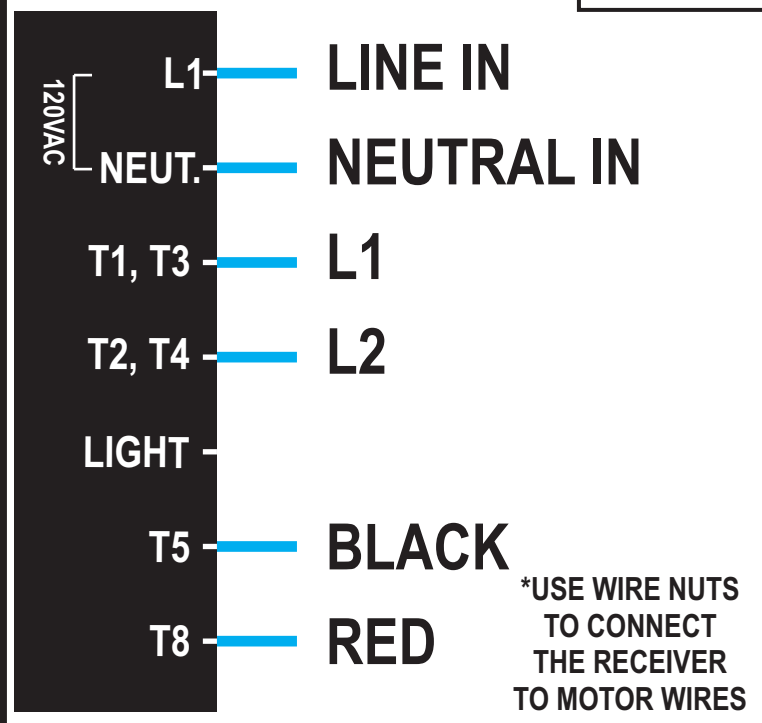


FIGURE 4

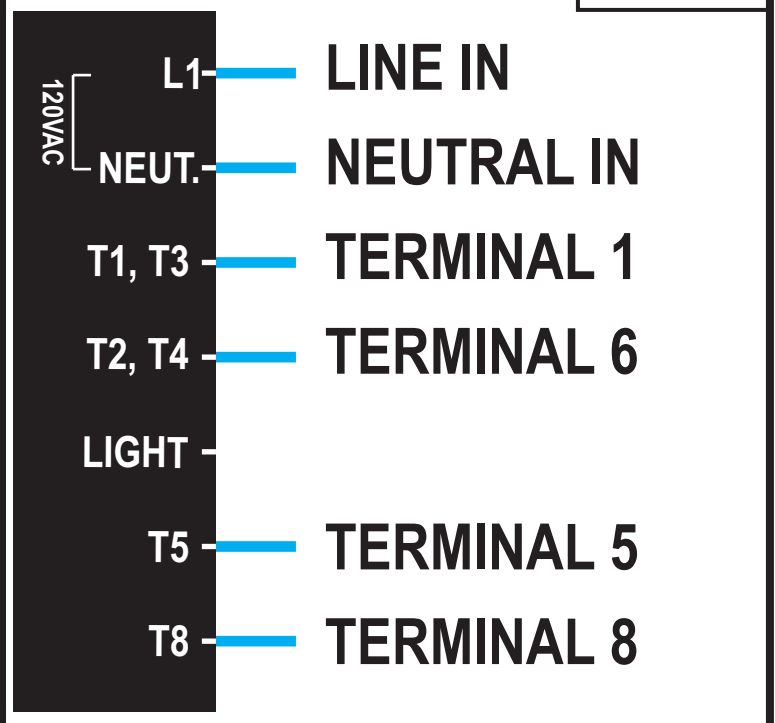


FIGURE 5

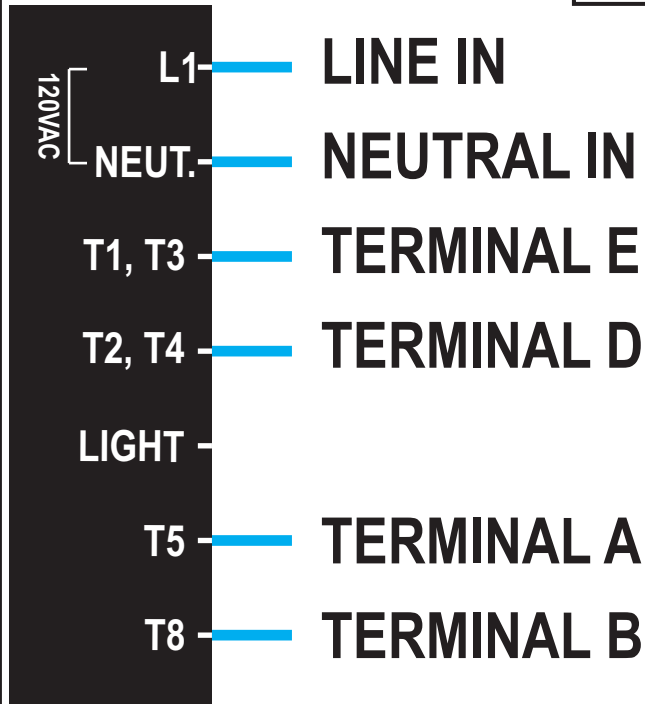


FIGURE 6

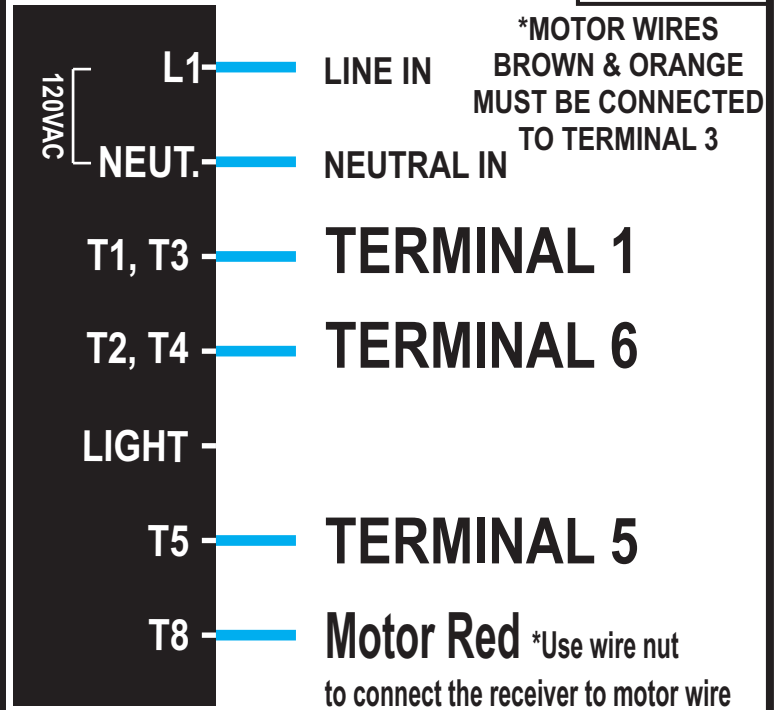


FIGURE 7

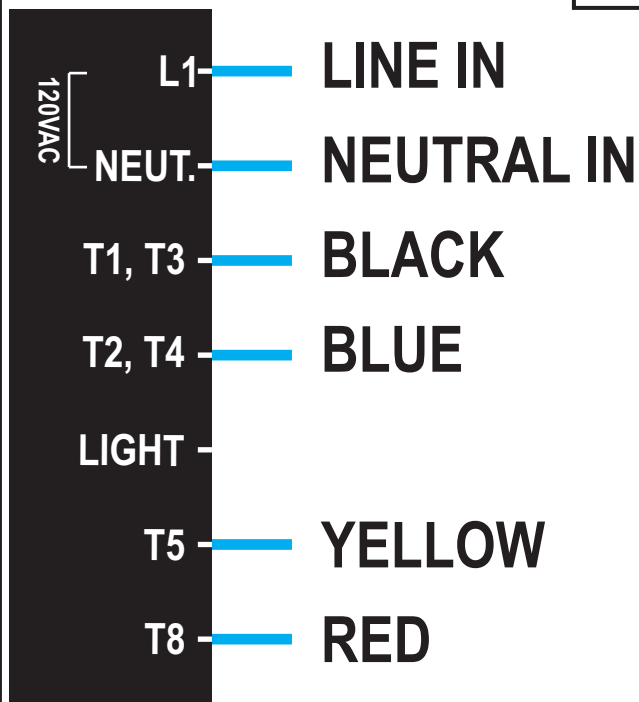


FIGURE 8

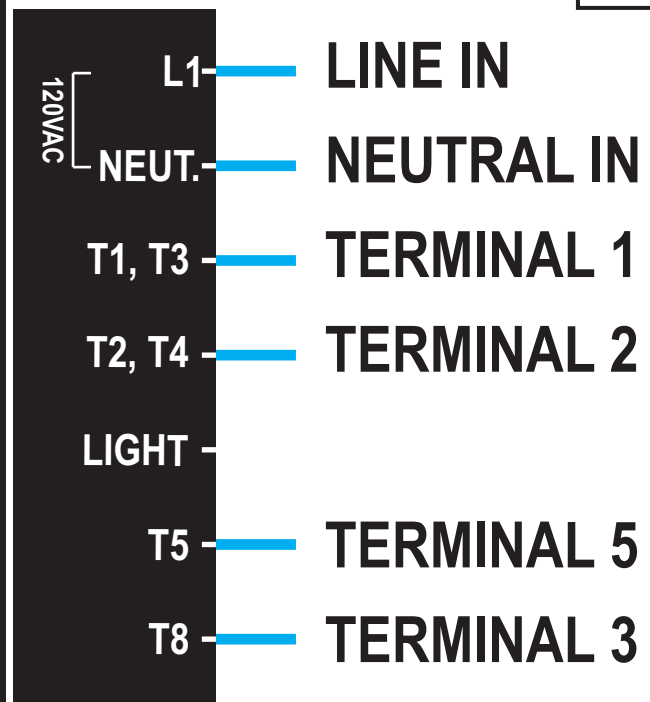




FIGURE 9

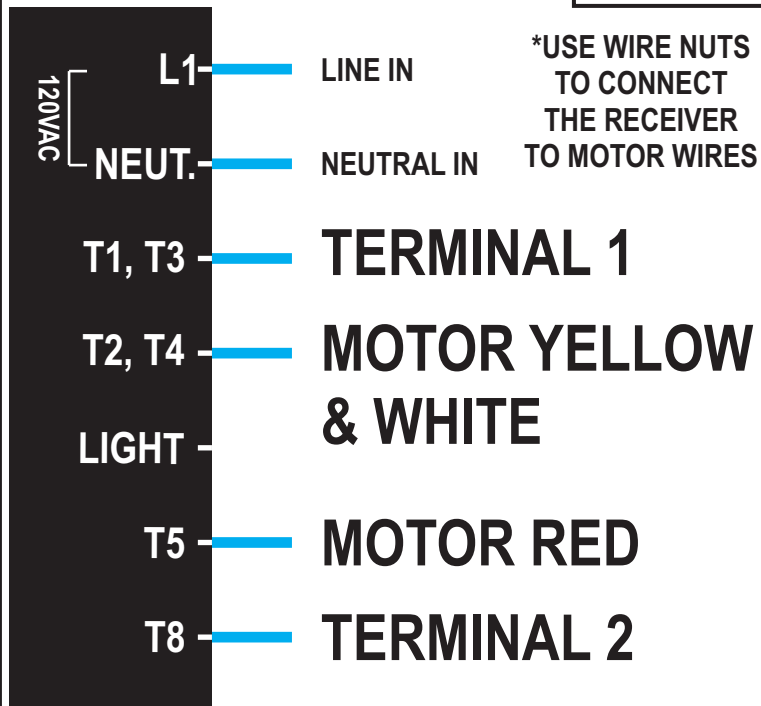


FIGURE 10

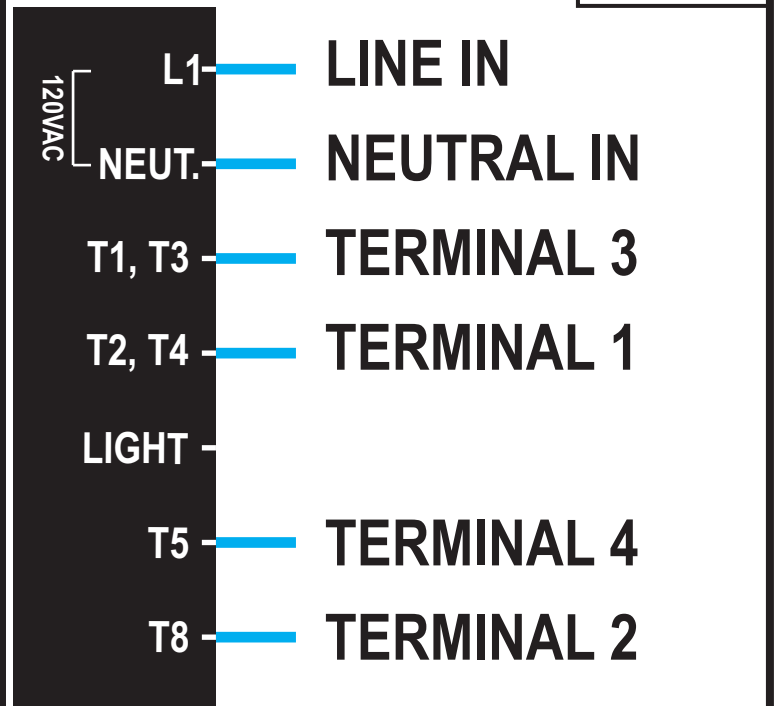


FIGURE 11

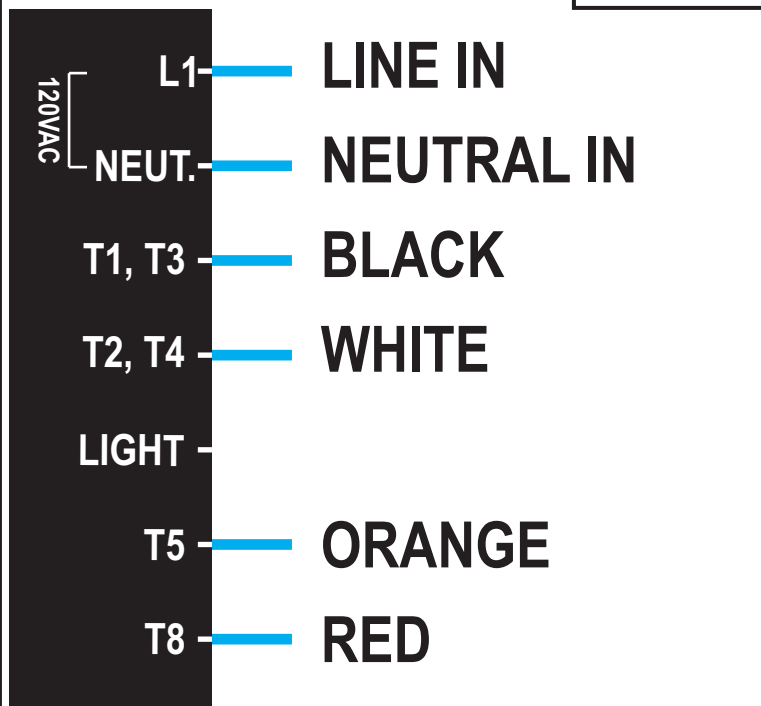


FIGURE 12

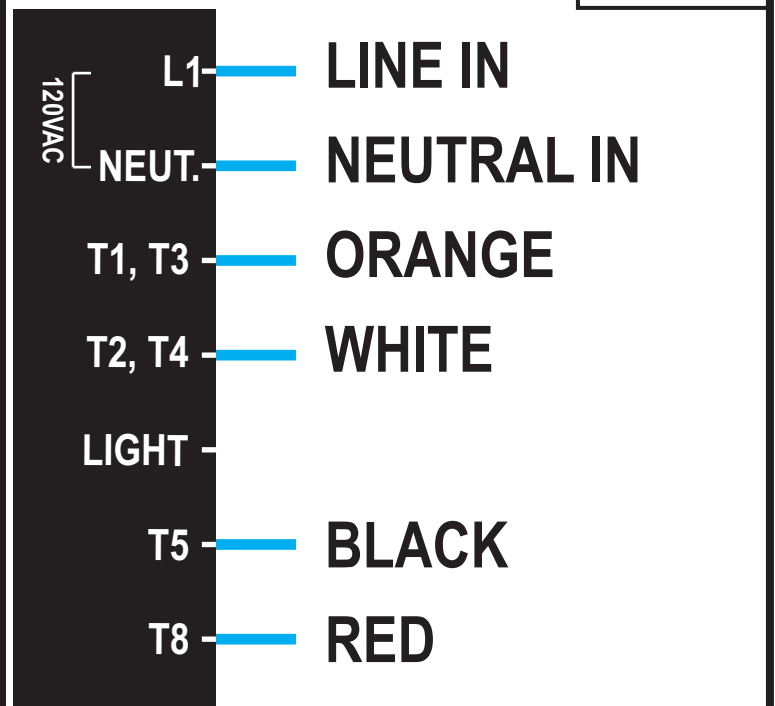


FIGURE 13

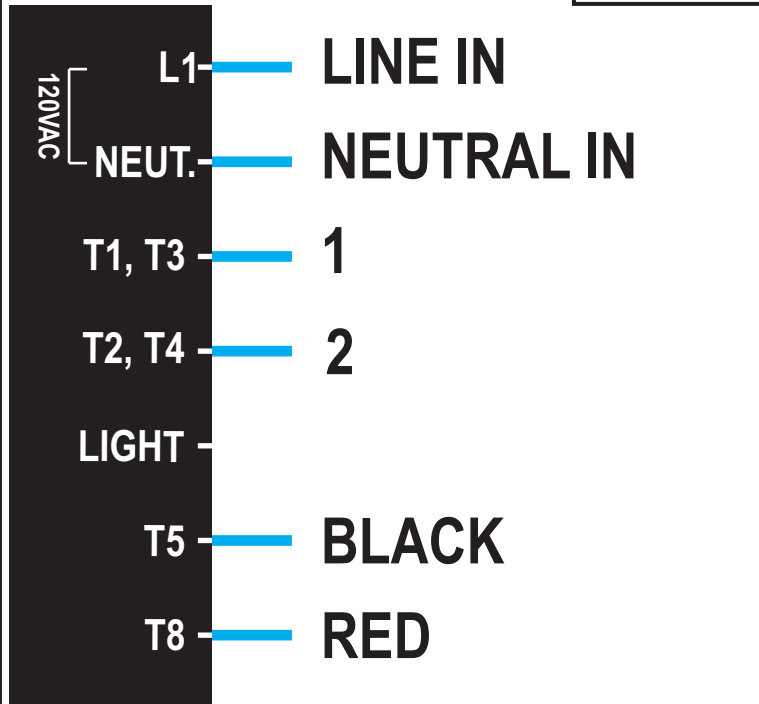


FIGURE 14

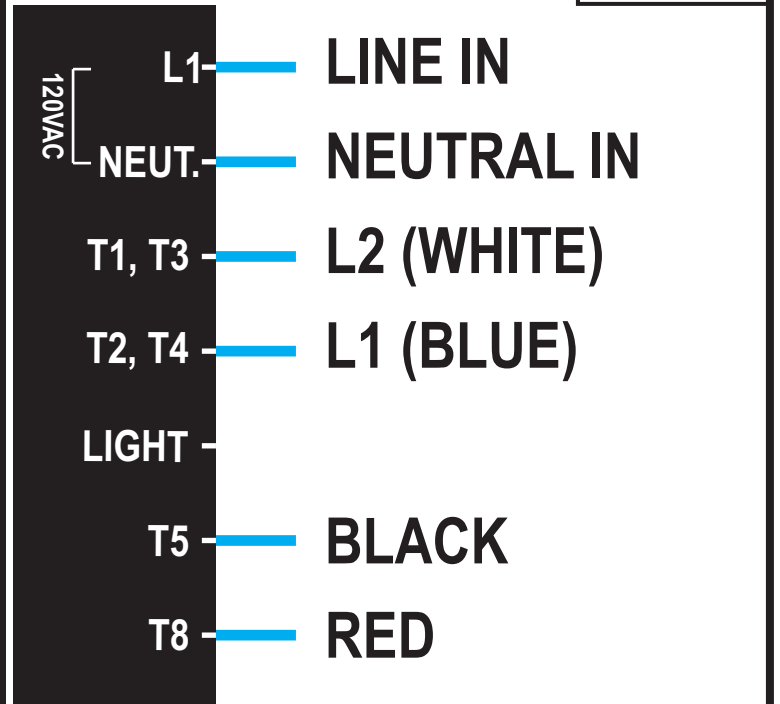


FIGURE 15

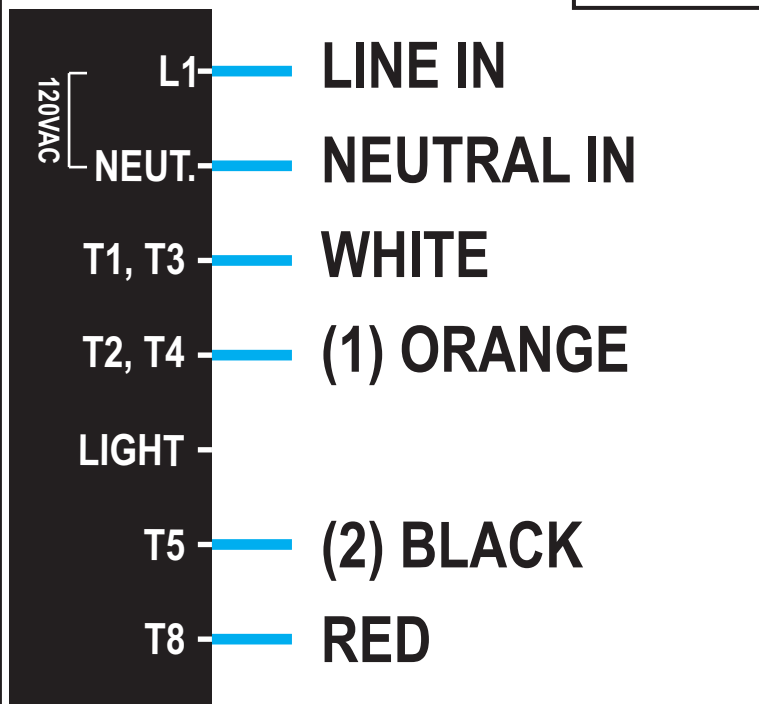


FIGURE 16

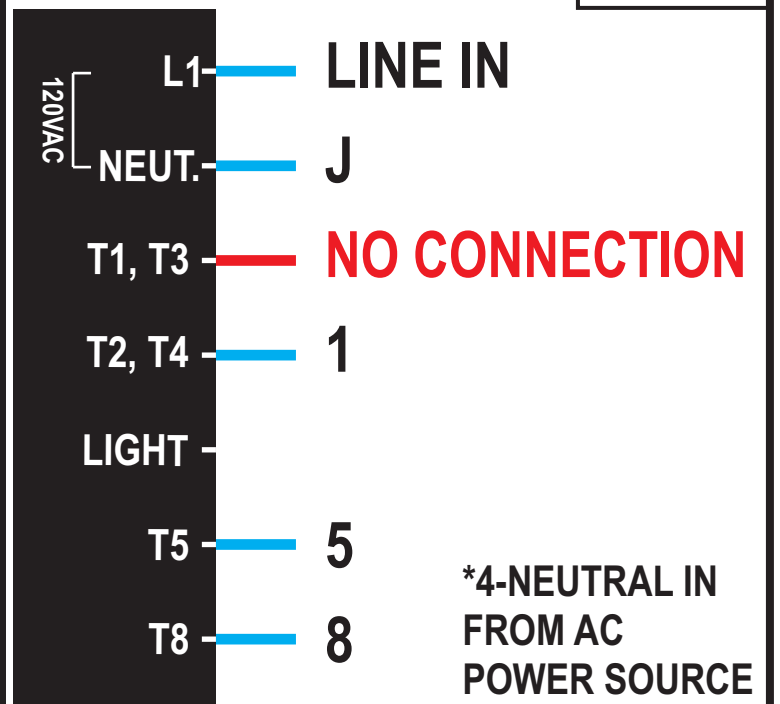


FIGURE 17

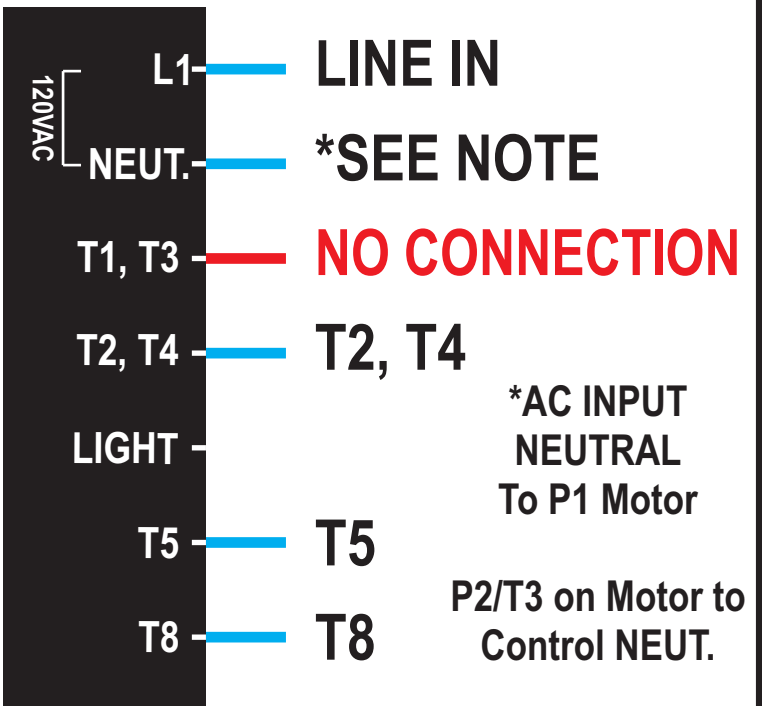
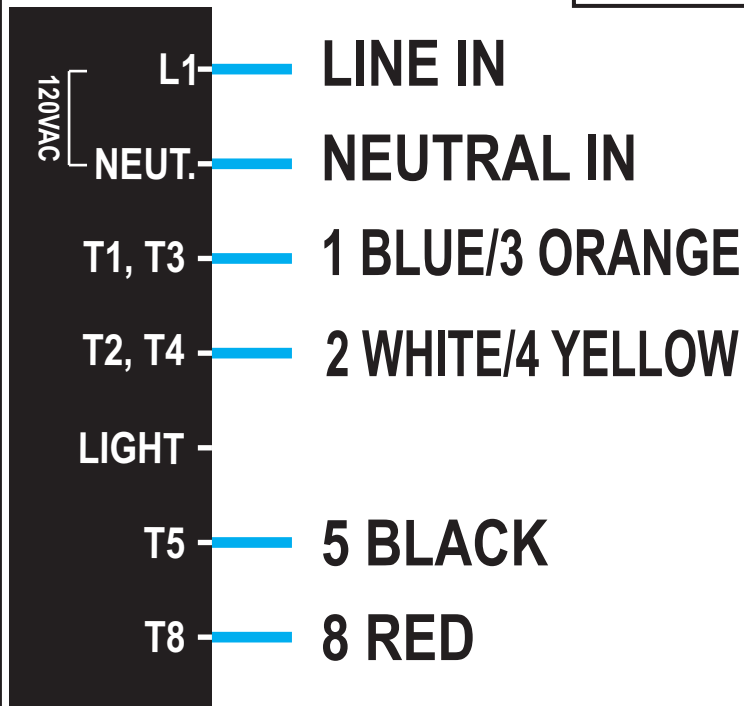


FIGURE 19

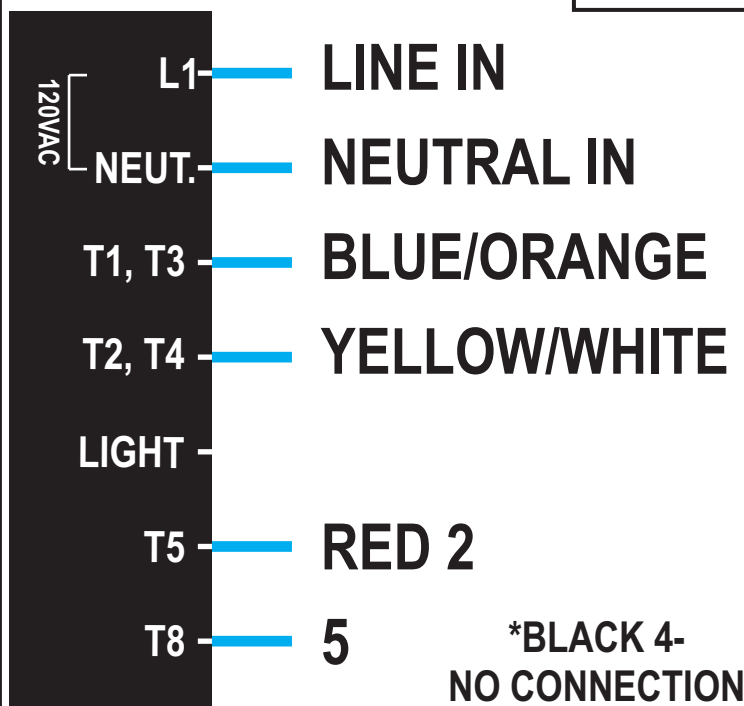


FIGURE 20

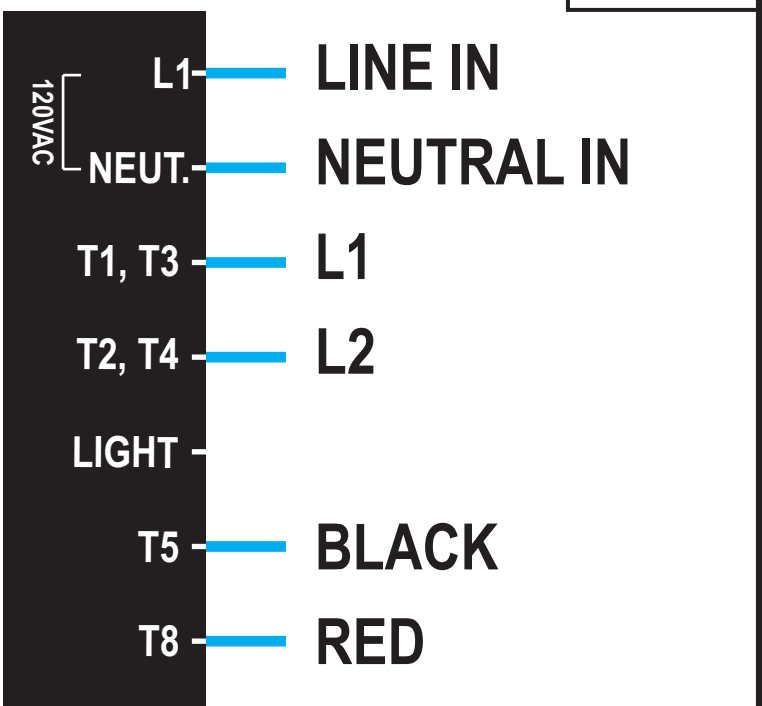


FIGURE 21

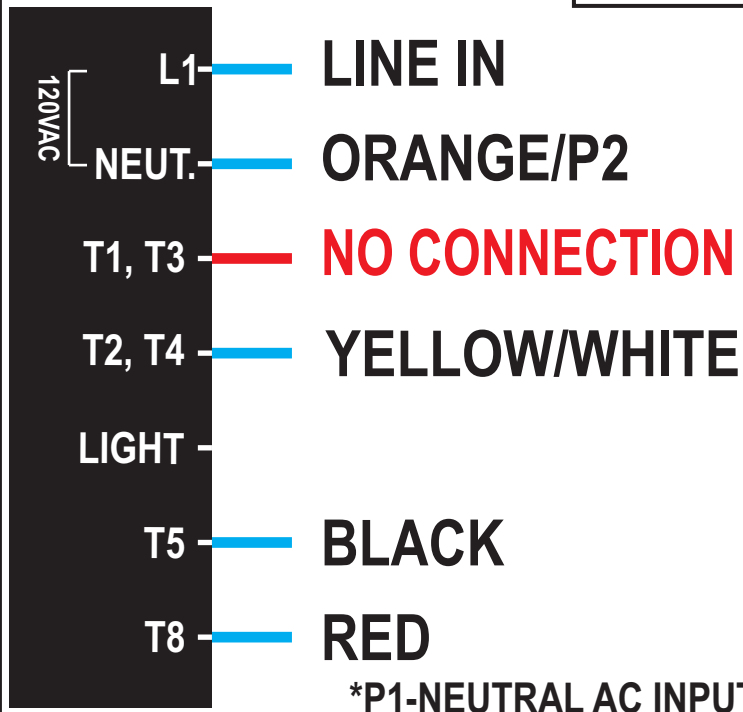


FIGURE 22

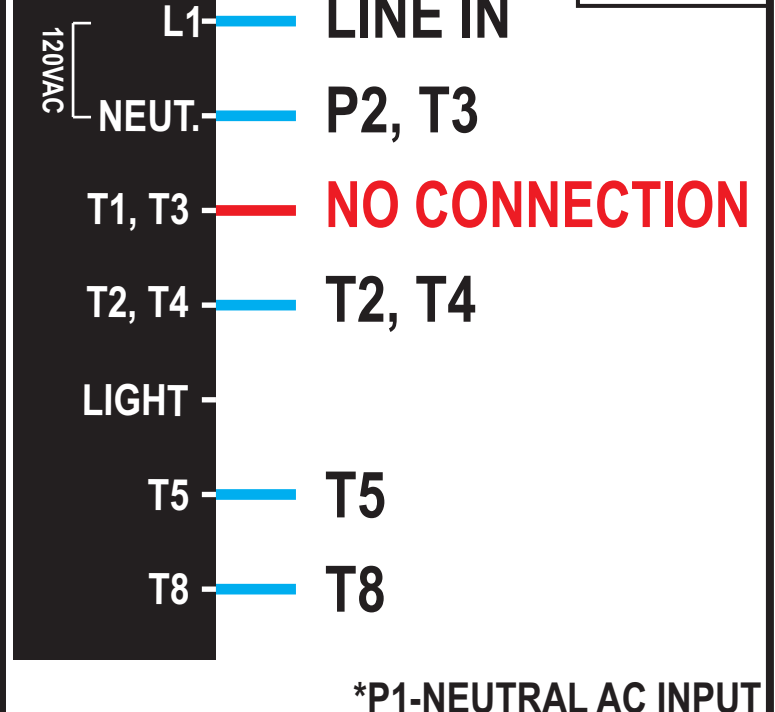


FIGURE 23

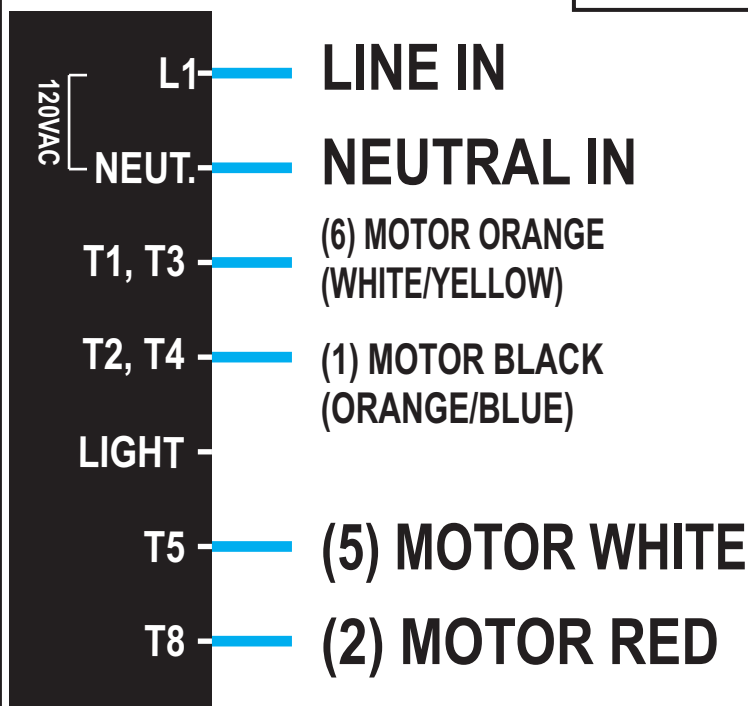


FIGURE 24

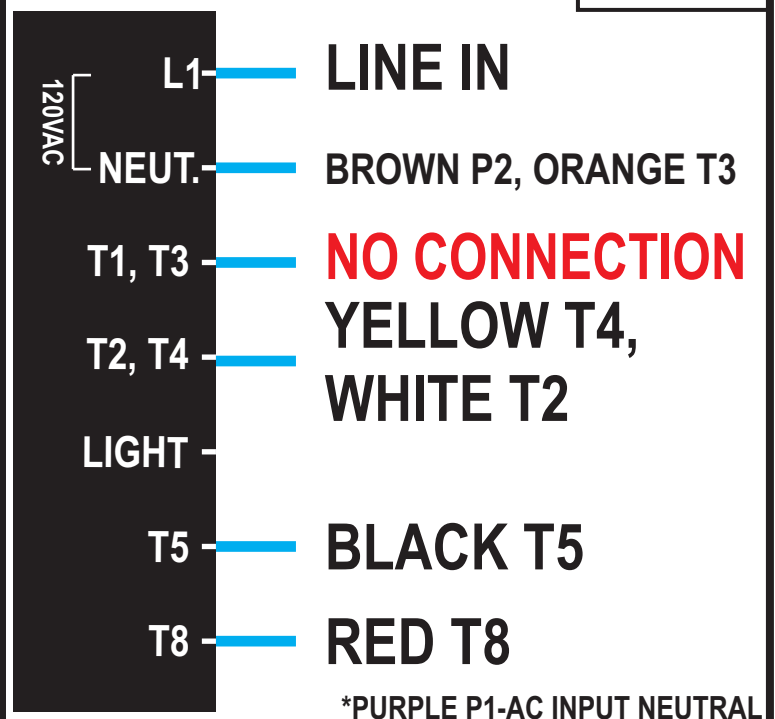


FIGURE 25

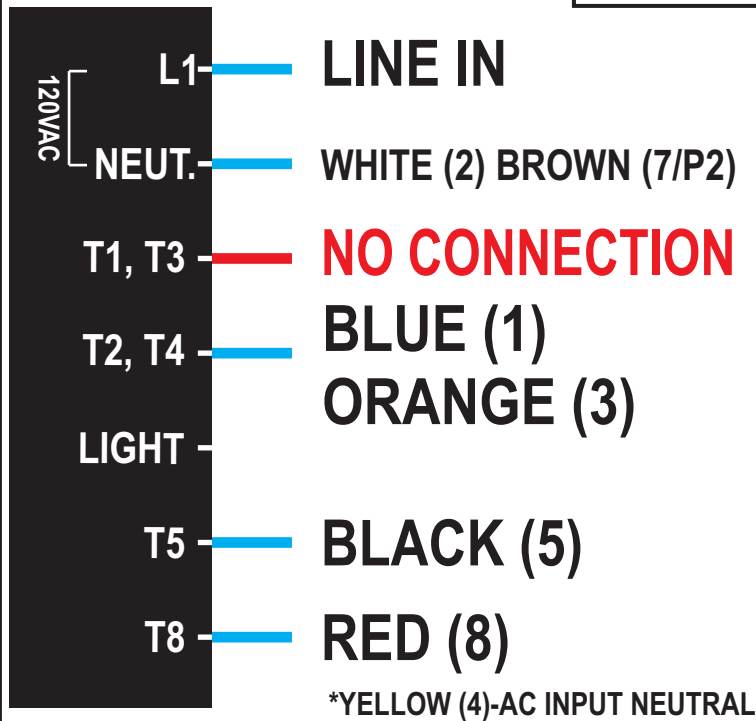


FIGURE 26

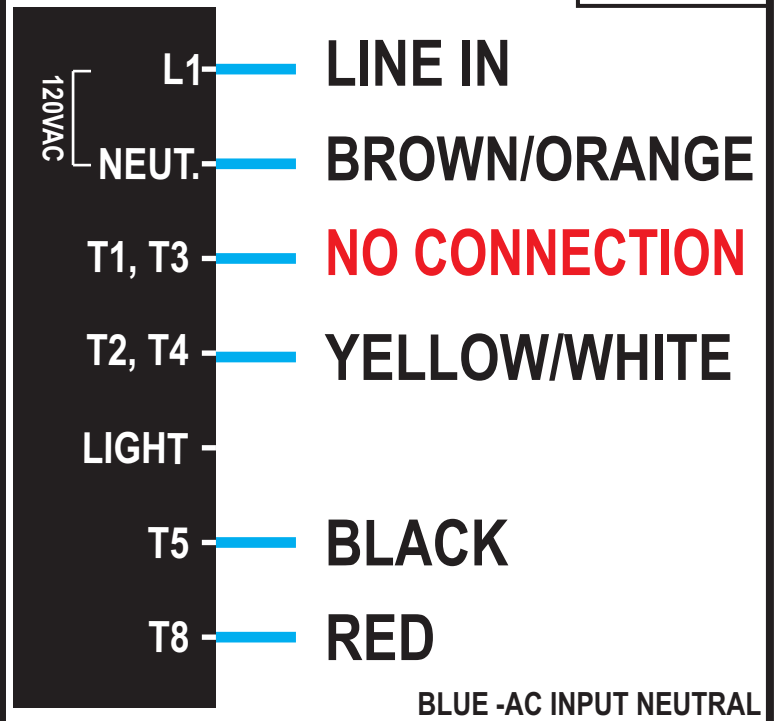


FIGURE 27

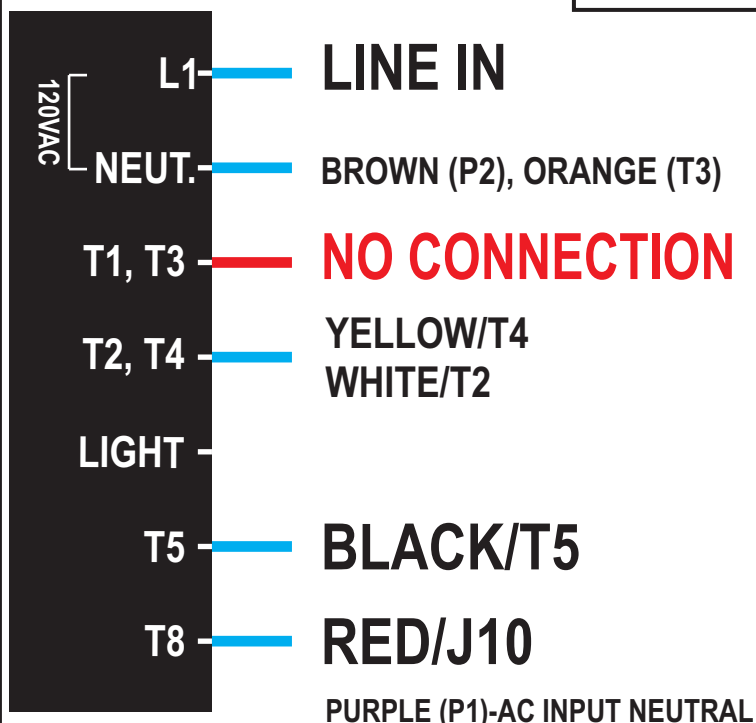


FIGURE 28

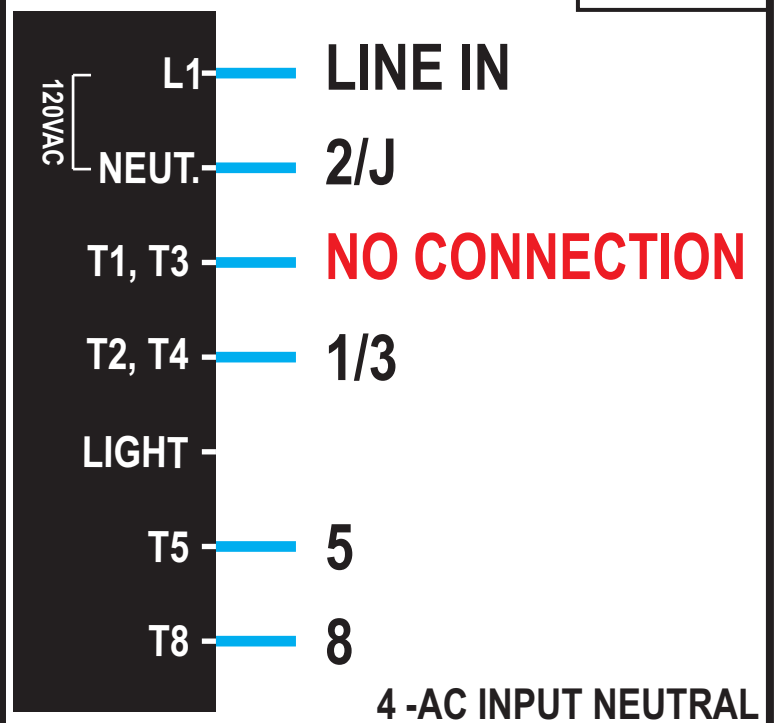


FIGURE 29

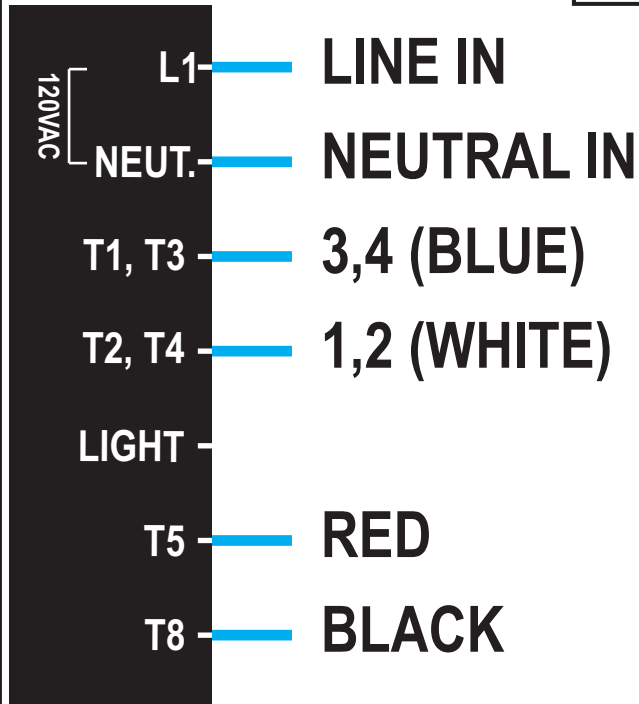


FIGURE 30

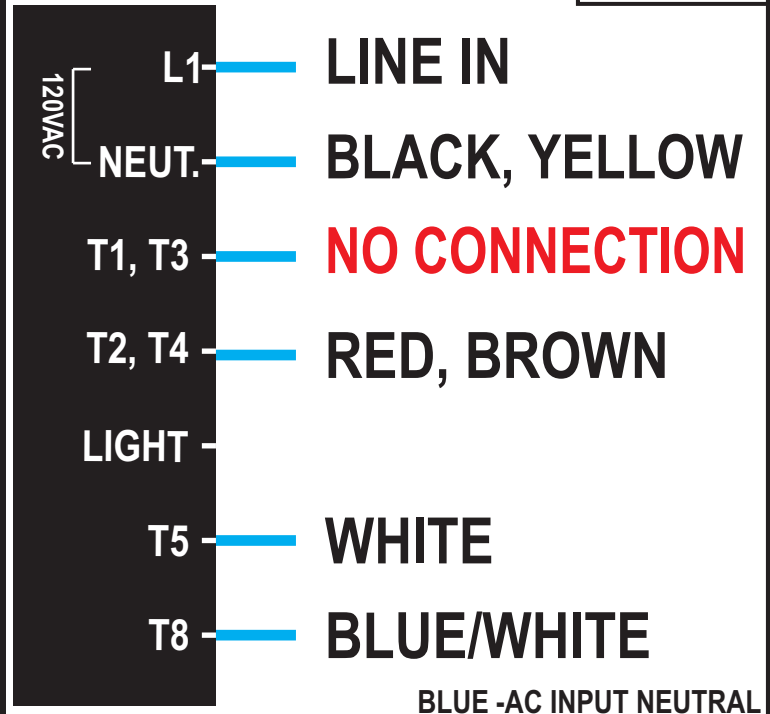


FIGURE 31

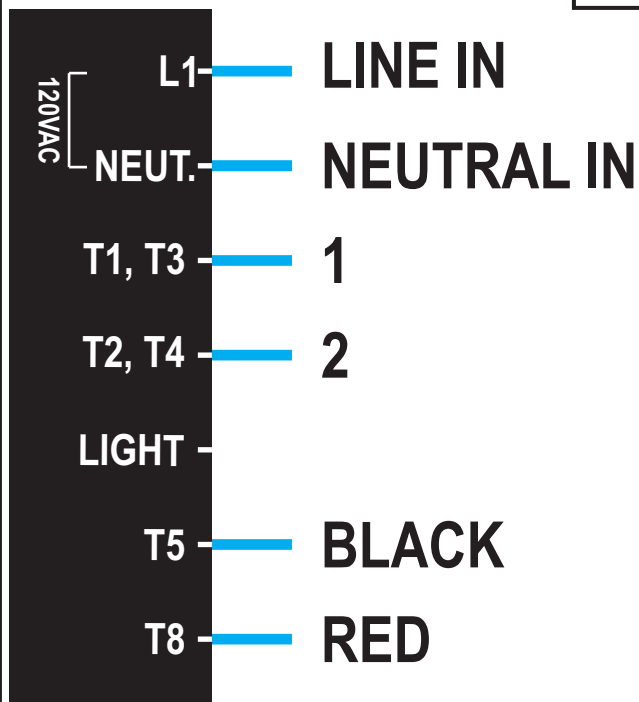


FIGURE 32

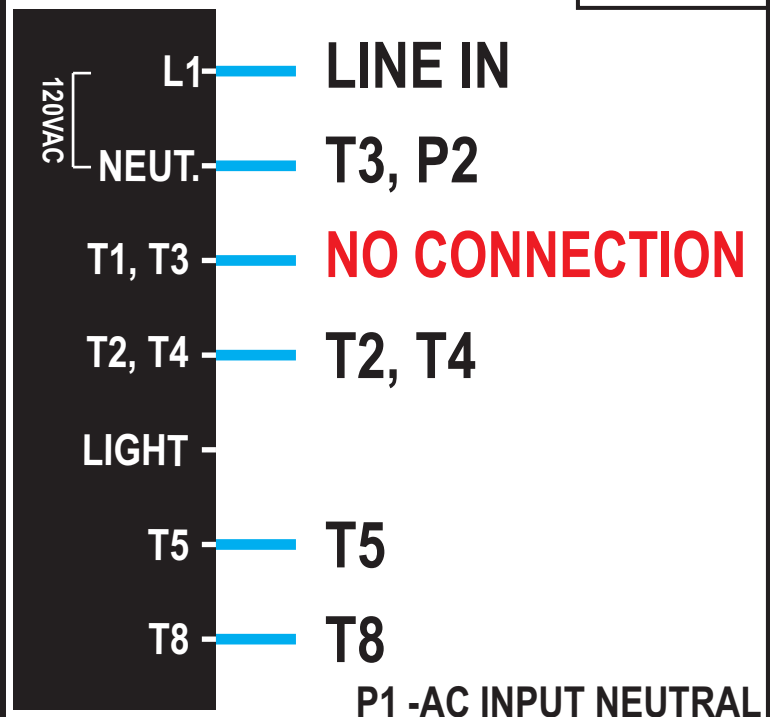


FIGURE 33

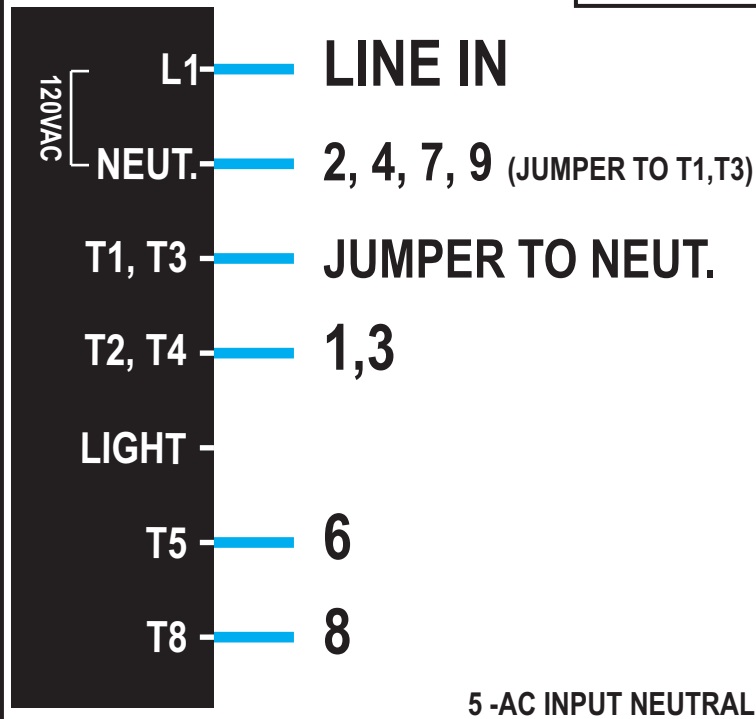


FIGURE 34

