

# LRF240VPR1L

RF Remote Control System, 240VAC Single Phase,  
Capacitor Start (4-Wire) AC Motor Reversing

<https://www.gamainc.com/product/lrf240vpr1/>

# GAMA ELECTRONICS

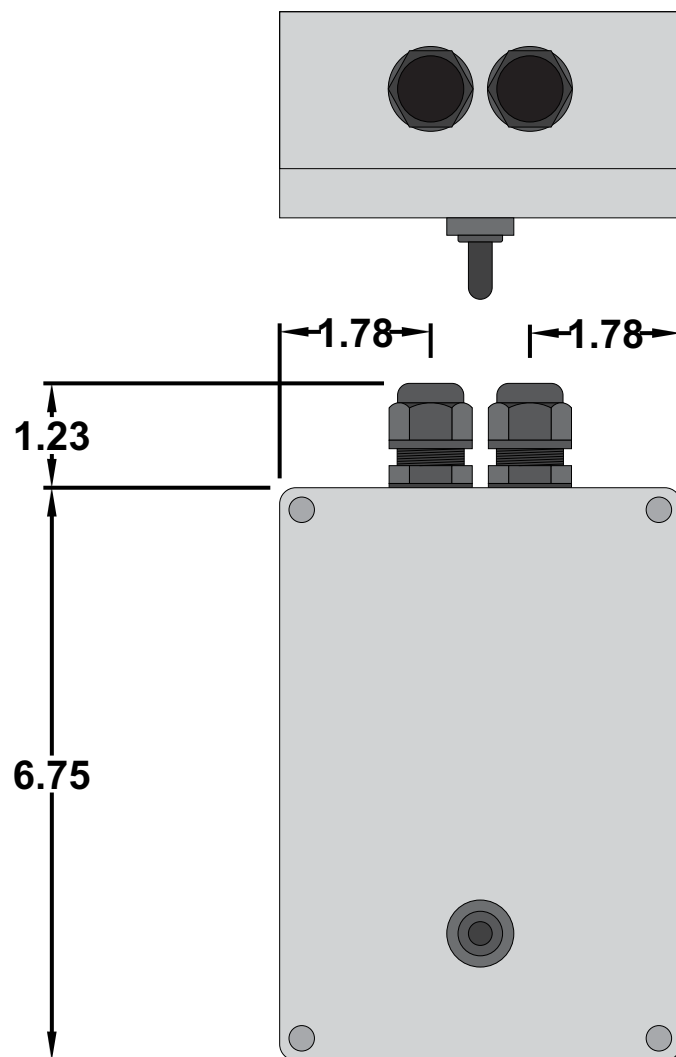
P.O. Box 1488, Crystal Lake, IL 60039

Phone: 815-356-9600

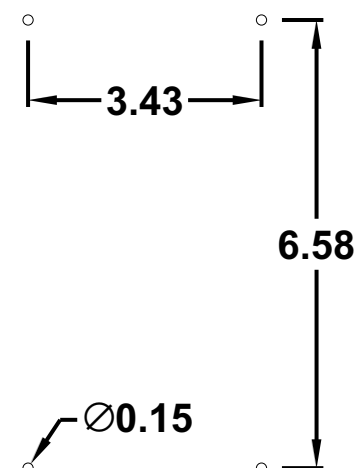
Fax: 815-356-9603

Email: [gama@gamainc.com](mailto:gama@gamainc.com)

[www.gamainc.com](http://www.gamainc.com)



## Mounting Detail



## Specifications

- Radio Frequency 340 MHz
- NEMA 4 enclosure
- The relay contacts are rated at 20 Amps/ 1.5HP
- External antenna
- Refer to the table in the wiring diagram for motor connections.

Drawn By: KEG

Information contained herein is proprietary information of GAMA Electronics Inc. The dissemination use or duplication of this information, for any purpose other than that for which the information is provided, is prohibited except by express written permission.

All dimensions are in inches and have a +/- .015" tolerance unless otherwise specified.

Rev: 0

Pg. 1 of 5

Release Date:  
04/22/20

Third Angle Projection  


# LRF240VPR1L

RF Remote Control System, 240VAC Single Phase,  
Capacitor Start (4-Wire) AC Motor Reversing

<https://www.gamainc.com/product/lrf240vpr1/>

# GAMA ELECTRONICS

P.O. Box 1488, Crystal Lake, IL 60039

Phone: 815-356-9600

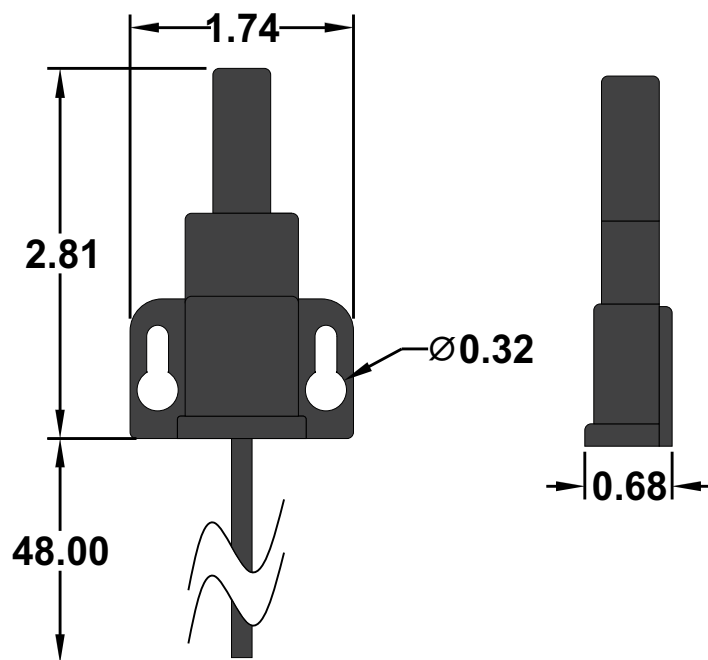
Fax: 815-356-9603

Email: [gama@gamainc.com](mailto:gama@gamainc.com)

[www.gamainc.com](http://www.gamainc.com)

## Long Range Antenna

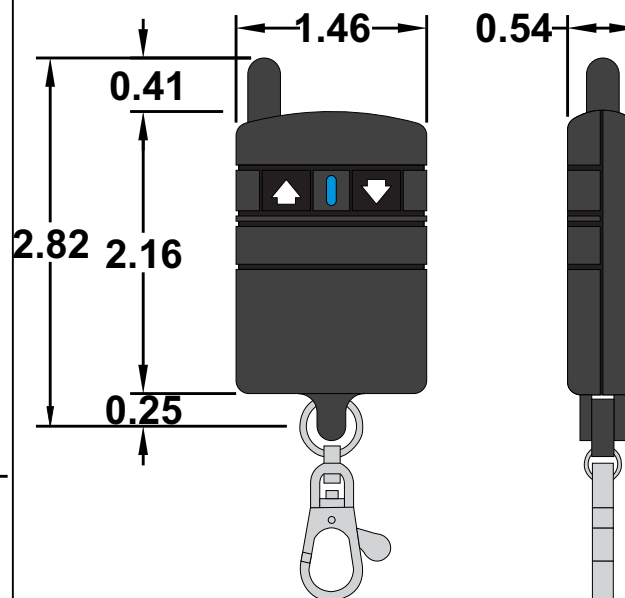
<https://www.gamainc.com/product/lra-340/>



## 2-Button Keyfob Transmitter

<https://www.gamainc.com/product/kf340-2/>

Included with standard transmitter option



## Available Accessories

- 340MHz Long Range External Antenna ([LRA-340](#))
- 2-Button Rechargeable Transmitter ([GKF-WPTX-2](#))
- 2-Button Waterproof Transmitter ([KF340-2WP](#))
- 2-Button Keyfob Transmitter ([KF340-2](#))
- Package of 6 Replacement A23 12V Alkaline Keyfob Batteries ([A23-6](#))
- Clear Protective Transmitter Pouch ([ZLB-67](#))

Drawn By: KEG

Information contained herein is proprietary information of GAMA Electronics Inc. The dissemination use or duplication of this information, for any purpose other than that for which the information is provided, is prohibited except by express written permission.

All dimensions are in inches and have a +/- .015" tolerance unless otherwise specified.

Rev: 0

Pg. 2 of 5

Release Date:  
04/22/20

Third Angle Projection

# LRF240VPR1L

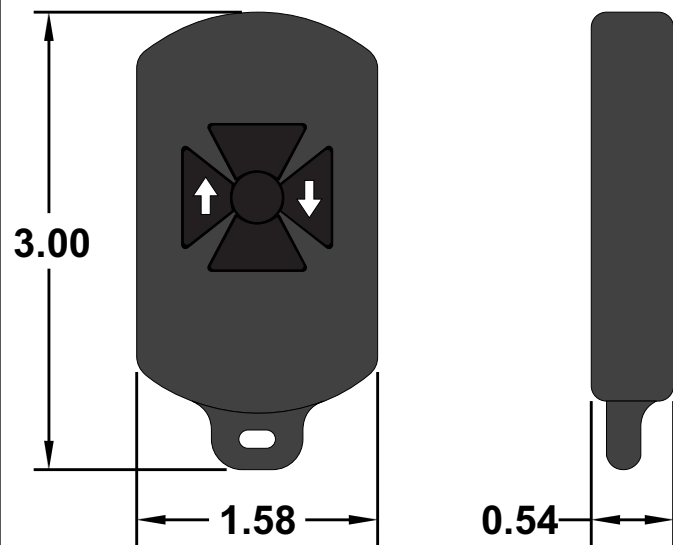
RF Remote Control System, 240VAC Single Phase,  
Capacitor Start (4-Wire) AC Motor Reversing

<https://www.gamainc.com/product/lrf240vpr1/>

## 2-Button Waterproof Transmitter

<https://www.gamainc.com/product/kf340-2wp/>

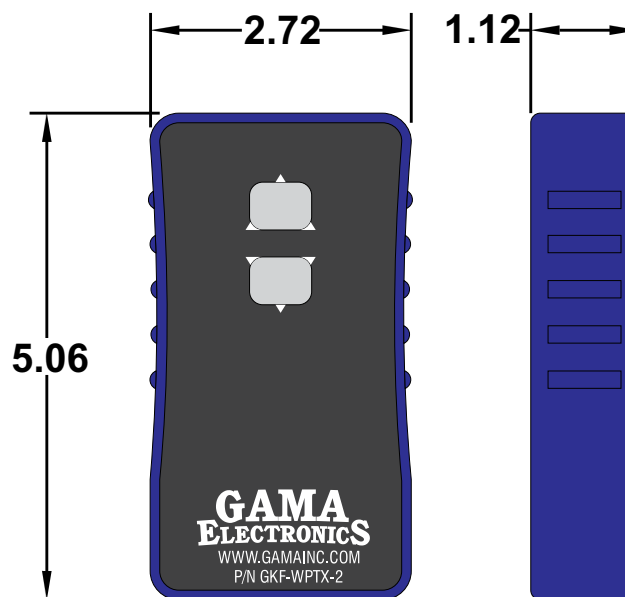
Included with waterproof transmitter option



## 2-Button Rechargeable Transmitter

<https://www.gamainc.com/product/gkf-wptx-2/>

Included with rechargeable transmitter option



# GAMA ELECTRONICS

P.O. Box 1488, Crystal Lake, IL 60039

Phone: 815-356-9600

Fax: 815-356-9603

Email: [gama@gamainc.com](mailto:gama@gamainc.com)

[www.gamainc.com](http://www.gamainc.com)

Drawn By: KEG

Information contained herein is proprietary information of GAMA Electronics Inc. The dissemination use or duplication of this information, for any purpose other than that for which the information is provided, is prohibited except by express written permission.

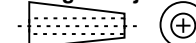
All dimensions are in inches and have a +/- .015" tolerance unless otherwise specified.

Rev: 0

Release Date:  
04/22/20

Pg. 3 of 5

Third Angle Projection



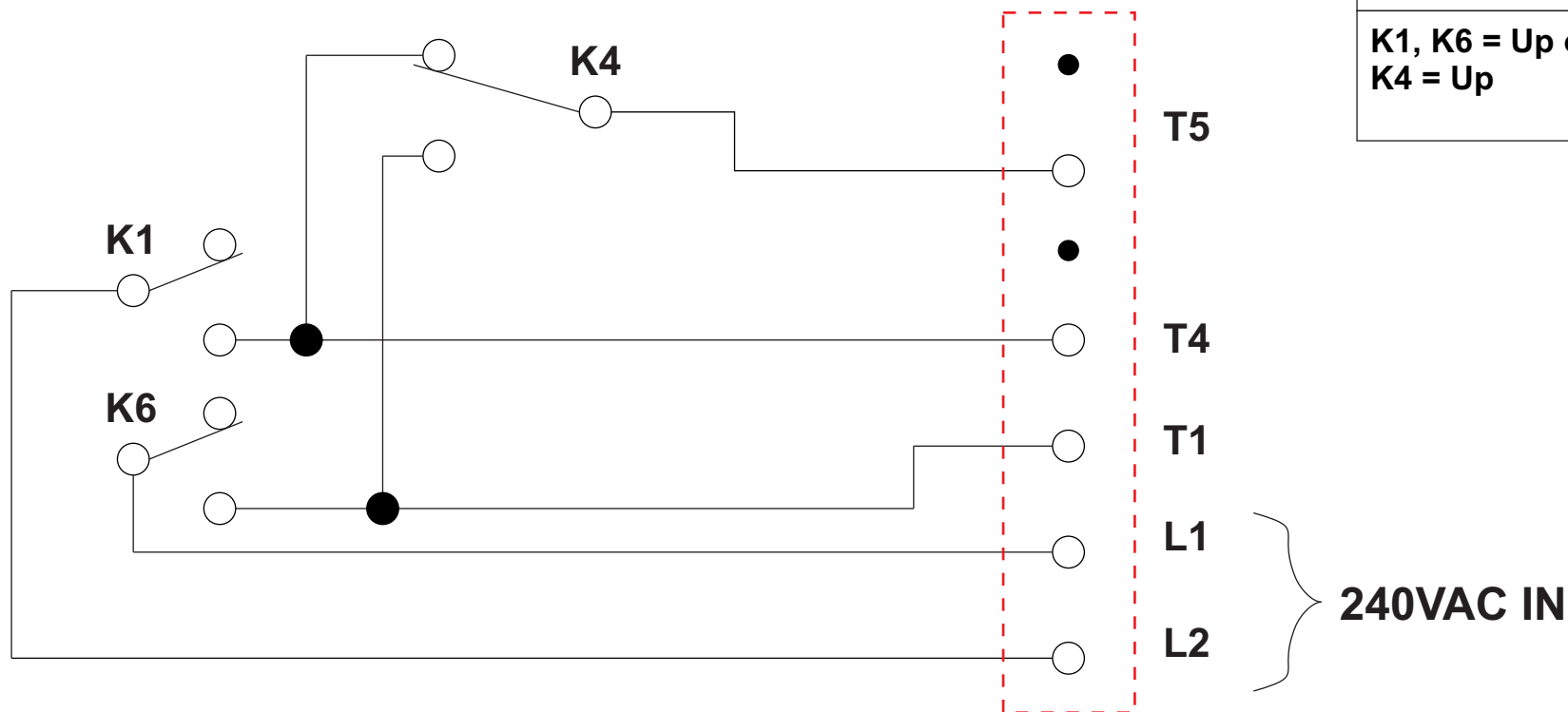


# LRF240VPR1L

RF Remote Control System, 240VAC Single Phase,  
Capacitor Start (4-Wire) AC Motor Reversing

<https://www.gamainc.com/product/lrf240vpr1/>

## Wiring Diagram



Relays shown in off position

# GAMA ELECTRONICS

P.O. Box 1488, Crystal Lake, IL 60039

Phone: 815-356-9600

Fax: 815-356-9603

Email: [gama@gamainc.com](mailto:gama@gamainc.com)

[www.gamainc.com](http://www.gamainc.com)

## Truth Table

K1, K6 = Up or Down  
K4 = Up

Drawn By: KEG

Information contained herein is proprietary information of GAMA Electronics Inc. The dissemination use or duplication of this information, for any purpose other than that for which the information is provided, is prohibited except by express written permission.

All dimensions are in inches and have a +/- .015" tolerance unless otherwise specified.

Rev: 0

Release Date:  
04/22/20

Pg. 5 of 5

Third Angle Projection

