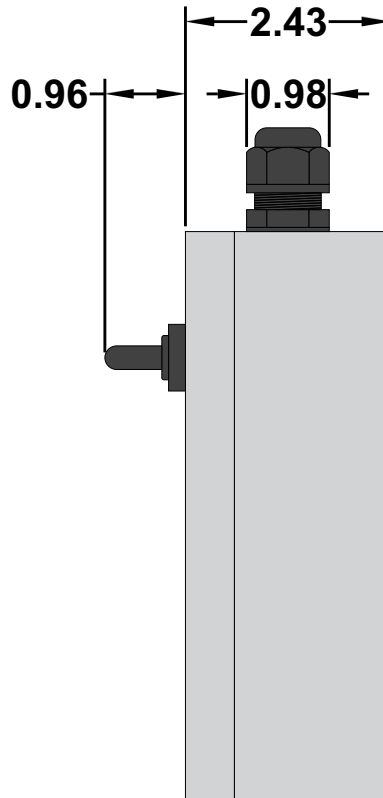
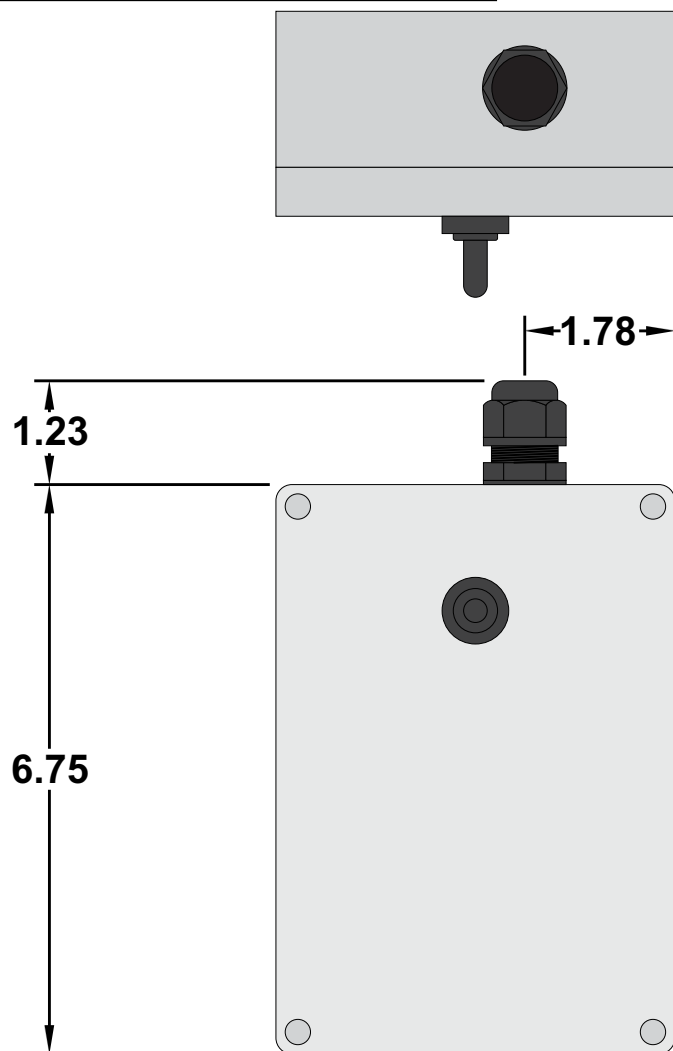


RF120VPRDC

RF Remote Control System for AC
Powered Winches

<https://www.gamainc.com/product/rf120vprdc/>

RF120VPRDC Receiver Dimensions



GAMA ELECTRONICS

P.O. Box 1488, Crystal Lake, IL 60039

Phone: 815-356-9600

Fax: 815-356-9603

Email: gama@gamainc.com

www.gamainc.com

Mounting Holes



Specifications

- Frequency: 340MHz
- Input voltage: 120VAC
- Operating temperature range: 0°F to 160°F.
- Transmit range is 100 feet under normal operating conditions.
- Up to 12 keyfob transmitters can be used with each receiver.
- Receiver can be set up for momentary or latching operation.

Drawn By: KEG

Information contained herein is proprietary information of GAMA Electronics Inc. The dissemination use or duplication of this information, for any purpose other than that for which the information is provided, is prohibited except by express written permission.

All dimensions are in inches and have a +/- .015" tolerance unless otherwise specified.

Rev: 0

Pg. 1 of 5

Release Date:
07/13/20

Third Angle Projection



RF120VPRDC

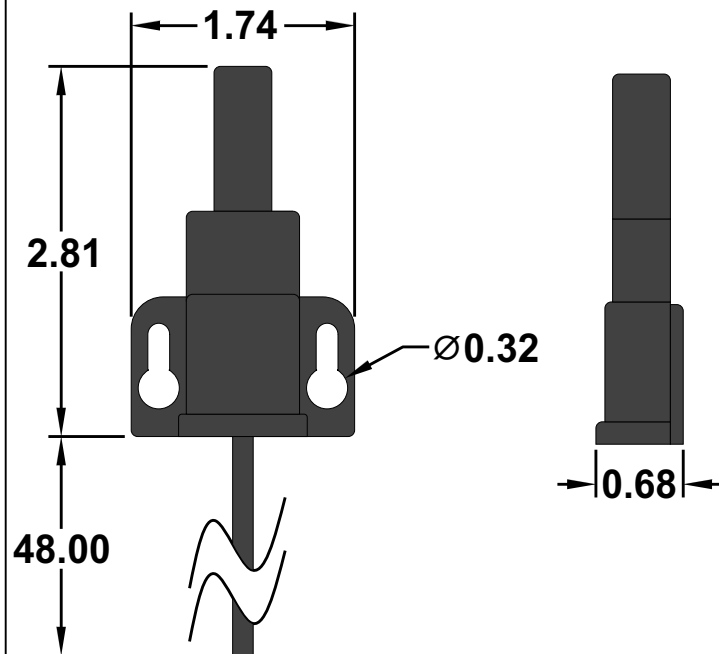
RF Remote Control System for AC
Powered Winches

<https://www.gamainc.com/product/rf120vprdc/>

Long Range Antenna

www.gamainc.com/product/lra-340

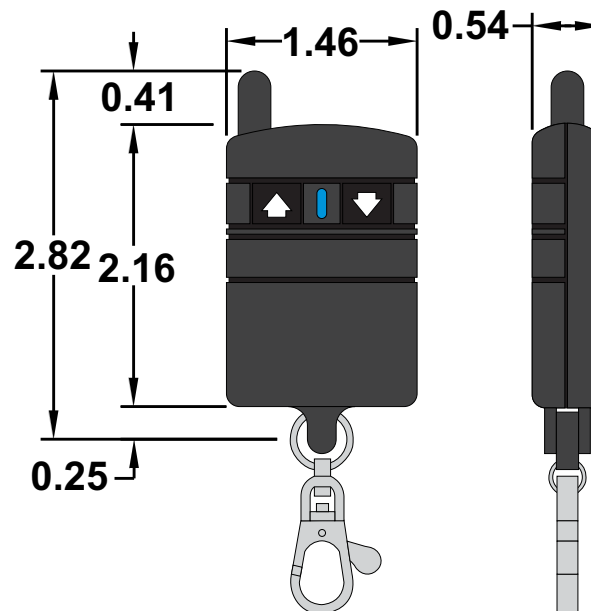
Included with long range option



2-Button Keyfob Transmitter

www.gamainc.com/product/kf340-2/

Included with standard option



GAMA ELECTRONICS

P.O. Box 1488, Crystal Lake, IL 60039

Phone: 815-356-9600

Fax: 815-356-9603

Email: gama@gamainc.com

www.gamainc.com

Accessories Sold Separately

- Extra 2-Button Waterproof Transmitter ([KF340-2WP](#))
- Extra 2-Button Keyfob Transmitter ([KF340-2](#))
- Package of 6 replacement A23 12V Alkaline Keyfob Batteries ([A23-6](#))
- Extra 2-Button Rechargeable Transmitter ([GKF-WPTX-2](#))
- Extra Long Range Antenna ([LRA-340](#))
- Clear Protective Transmitter Pouch ([ZLB-67](#))

Drawn By: KEG

Information contained herein is proprietary information of GAMA Electronics Inc. The dissemination use or duplication of this information, for any purpose other than that for which the information is provided, is prohibited except by express written permission.

All dimensions are in inches and have a +/- .015" tolerance unless otherwise specified.

Rev: 0

Release Date:
07/13/20

Pg. 2 of 5

Third Angle Projection

RF120VPRDC

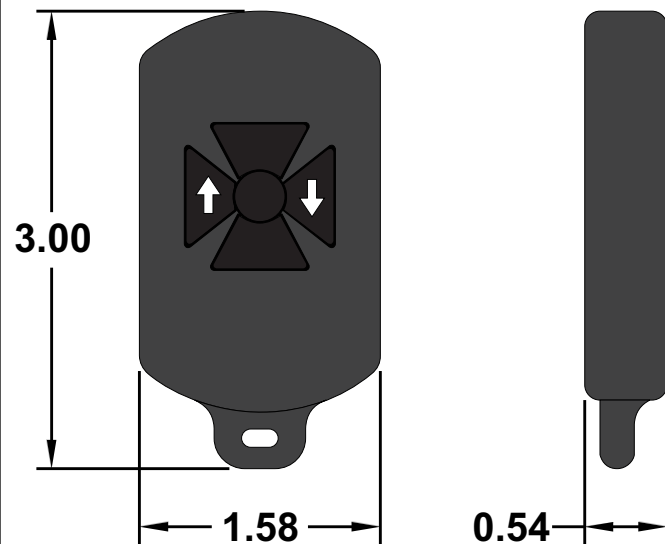
RF Remote Control System for AC
Powered Winches

<https://www.gamainc.com/product/rf120vprdc/>

2-Button Waterproof Transmitter

www.gamainc.com/product/kf340-2wp/

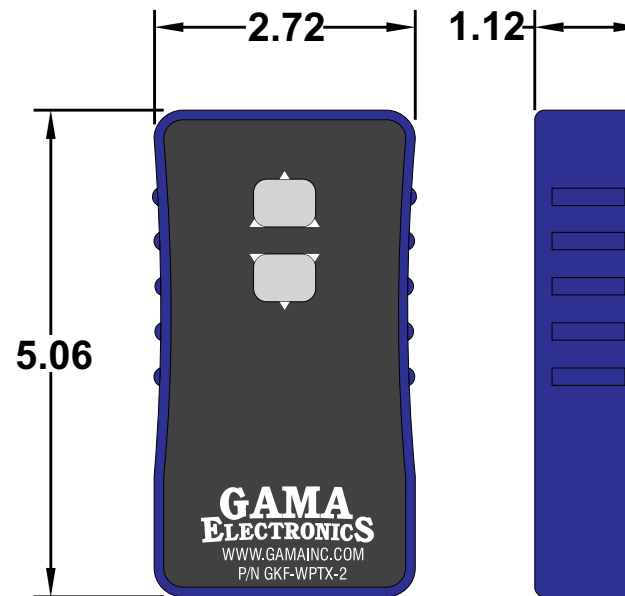
Included in waterproof transmitter kits



2-Button Rechargeable Transmitter

<https://www.gamainc.com/product/gkf-wptx-2/>

Included with rechargeable transmitter
option



GAMA ELECTRONICS

P.O. Box 1488, Crystal Lake, IL 60039

Phone: 815-356-9600

Fax: 815-356-9603

Email: gama@gamainc.com

www.gamainc.com

Drawn By: KEG

Information contained herein is proprietary information of GAMA Electronics Inc. The dissemination use or duplication of this information, for any purpose other than that for which the information is provided, is prohibited except by express written permission.

All dimensions are in inches and have a +/- .015" tolerance unless otherwise specified.

Rev: 0

Release Date:
07/13/20

Pg. 3 of 5

Third Angle Projection

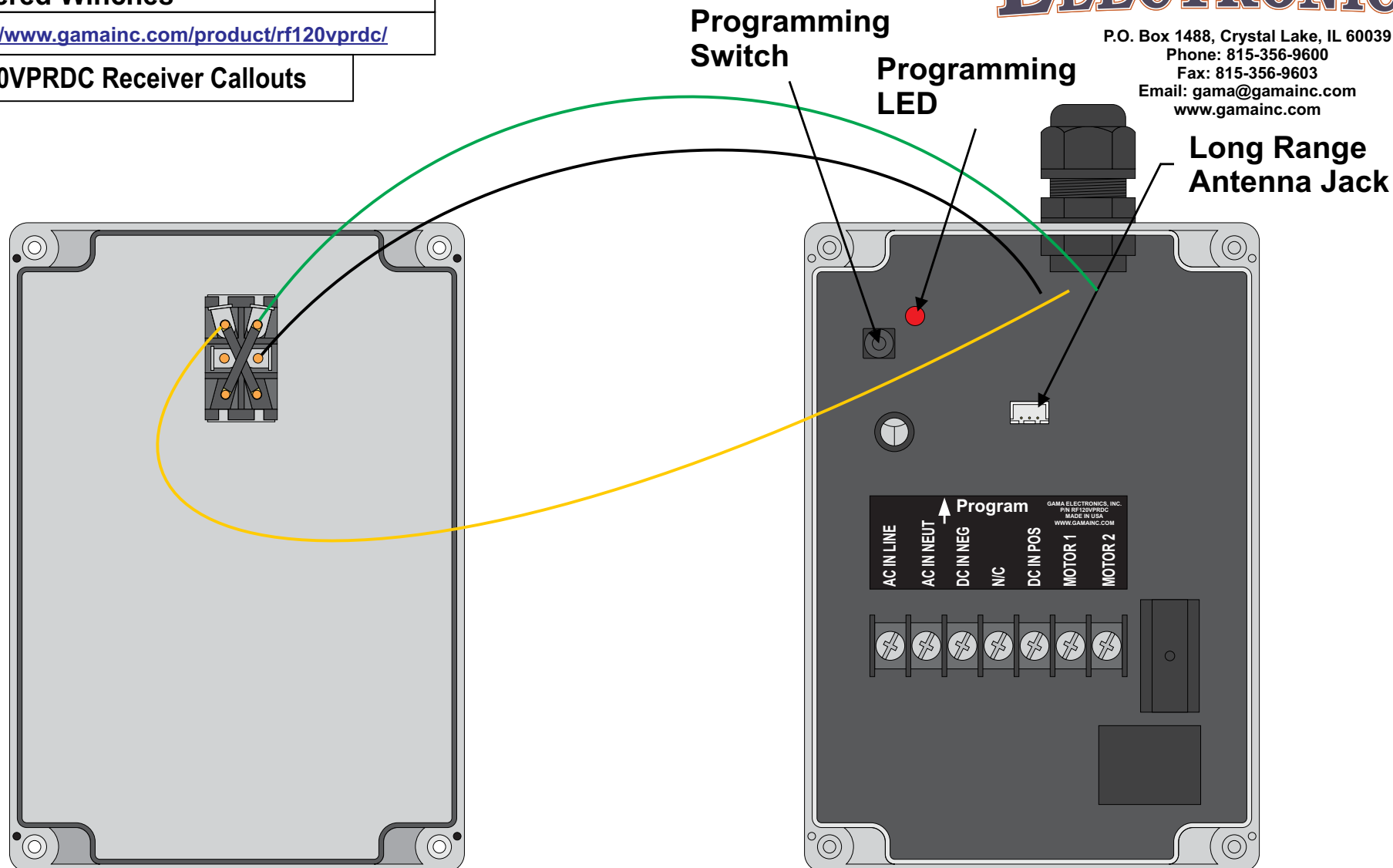


RF120VPRDC Receiver Callouts

GAMA ELECTRONICS

www.qamainc.com

Long Range Antenna Jack

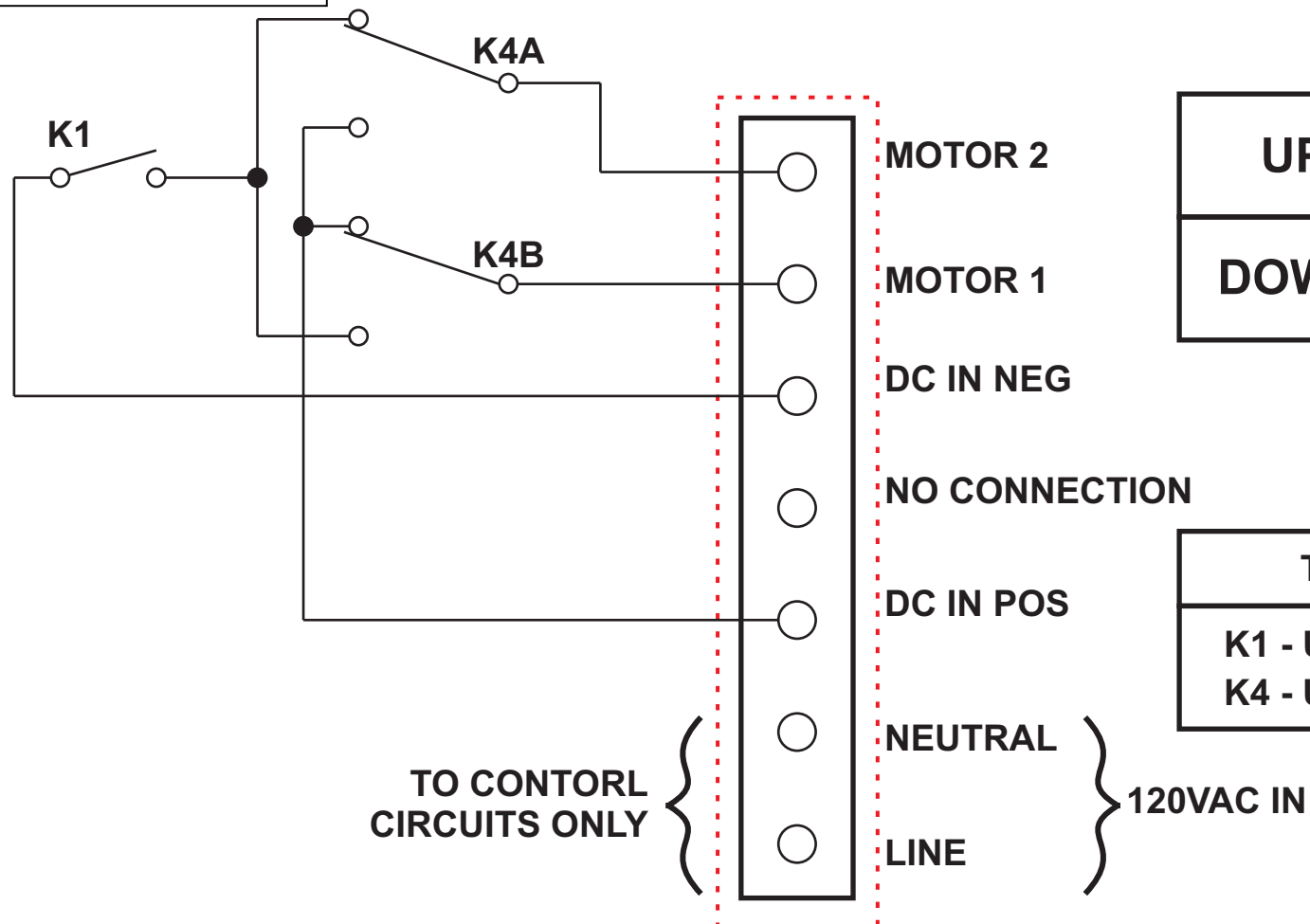


RF120VPRDC

RF Remote Control System for AC
Powered Winches

<https://www.gamainc.com/product/rf120vprdc/>

RF120VPRDC Wiring Schematic



GAMA ELECTRONICS

P.O. Box 1488, Crystal Lake, IL 60039

Phone: 815-356-9600

Fax: 815-356-9603

Email: gama@gamainc.com

www.gamainc.com

UP=

**MOTOR 2 +
MOTOR 1 -**

DOWN=

**MOTOR 2 -
MOTOR 1 +**

TRUTH TABLE

**K1 - UP OR DOWN
K4 - UP**

****RELAYS SHOWN IN OFF CONDITION**

Drawn By: KEG

Information contained herein is proprietary information of GAMA Electronics Inc. The dissemination use or duplication of this information, for any purpose other than that for which the information is provided, is prohibited except by express written permission.

All dimensions are in inches and have a +/- .015" tolerance unless otherwise specified.

Rev: 0

Release Date:
07/13/20

Pg. 5 of 5

Third Angle Projection

