

WP28-3P-MOM

Waterproof Toggle Switch, 30A
Momentary On-Off-Momentary On

<https://www.gamainc.com/product/wp28-3p-mom/>

GAMA ELECTRONICS

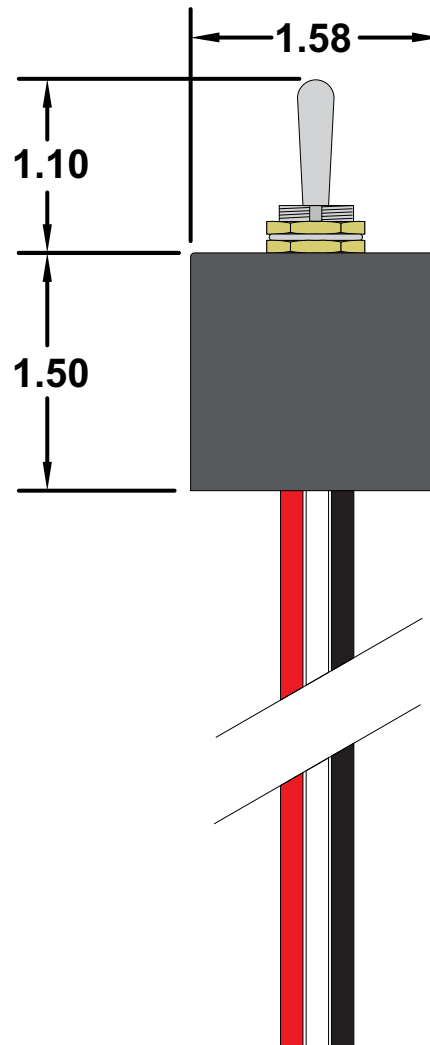
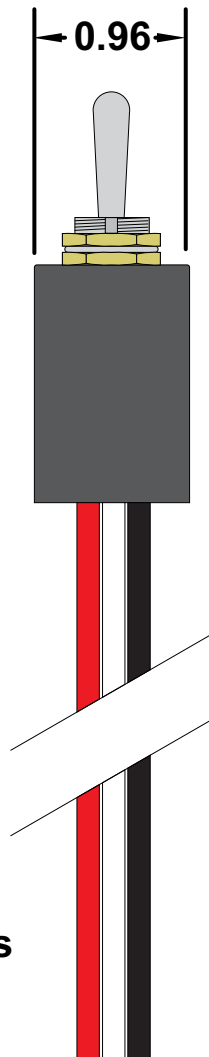
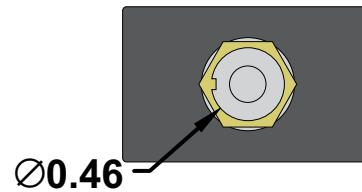
P.O. Box 1488, Crystal Lake, IL 60039

Phone: 815-356-9600

Fax: 815-356-9603

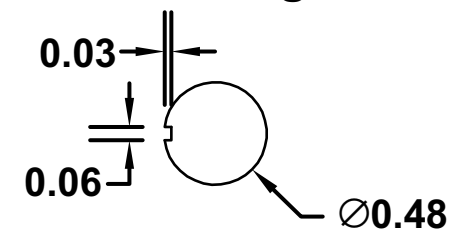
Email: gama@gamainc.com

www.gamainc.com



*Black Lead is
Common

Mounting Hole



Specifications

•Single Pole Double Throw (On)-Off-(On)*

*() Denotes Momentary

•30A 12VDC

•15A 125VAC

•10A 250VAC

•Mounts in a 0.48" diameter hole and has 6" long wire leads

•UL and CSA approved

Drawn By: KEG

Information contained herein is proprietary information of GAMA Electronics Inc. The dissemination use or duplication of this information, for any purpose other than that for which the information is provided, is prohibited except by express written permission.

All dimensions are in inches and have a +/- .015" tolerance unless otherwise specified.

Rev: A

Pg. 1 of 1

Release Date: 04/29/20

Third Angle Projection

