

WP28PR-MTD

Waterproof Toggle Switch, 30A Reverse Polarity DC Motor Control – Maintained

<https://www.gamainc.com/product/wp28pr-mtd/>

GAMA ELECTRONICS

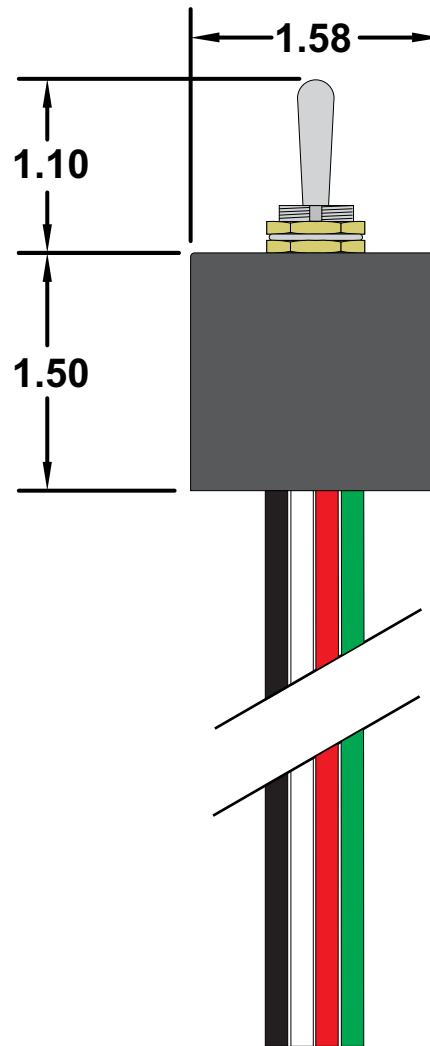
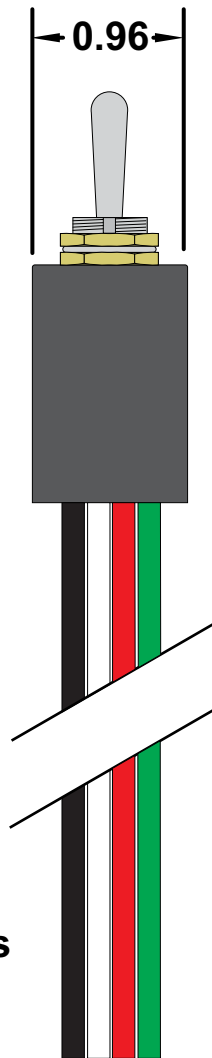
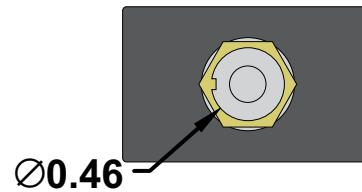
P.O. Box 1488, Crystal Lake, IL 60039

Phone: 815-356-9600

Fax: 815-356-9603

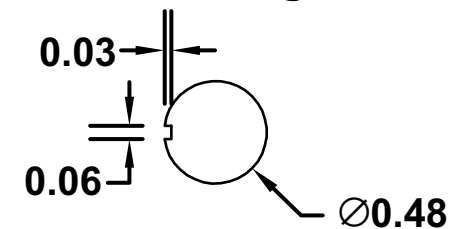
Email: gama@gamainc.com

www.gamainc.com



***Black Lead is Common**

Mounting Hole



Specifications

- Double Pole Double Throw On-Off-On Polarity Reversing
- 30A 12VDC
- 15A 24VDC
- Mounts in a 0.48" diameter hole and has 6" long wire leads
- UL and CSA approved

Drawn By: KEG

Information contained herein is proprietary information of GAMA Electronics Inc. The dissemination use or duplication of this information, for any purpose other than that for which the information is provided, is prohibited except by express written permission.

All dimensions are in inches and have a +/- .015" tolerance unless otherwise specified.

Rev: 0

Pg. 1 of 1

Release Date: 04/29/20

Third Angle Projection

